

Product datasheet for **TA347431**

MMP14 Rabbit Polyclonal Antibody

Product data:

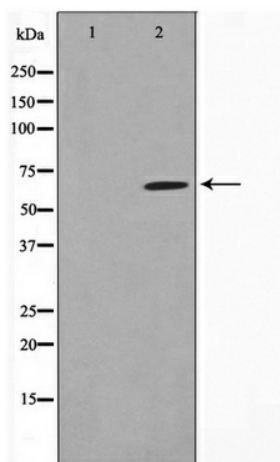
Product Type:	Primary Antibodies
Applications:	WB
Recommended Dilution:	WB: 1:500-1:3000
Reactivity:	Human, Mouse, Rat
Host:	Rabbit
Isotype:	IgG
Clonality:	Polyclonal
Immunogen:	The immunogen for anti-MMP14 Antibody: A synthesized peptide derived from human MMP14
Formulation:	Rabbit IgG in phosphate buffered saline , pH 7.4, 150mM NaCl, 0.02% sodium azide and 50% glycerol. Store at -20?. Stable for 12 months from date of receipt
Concentration:	lot specific
Purification:	Affinity-chromatography
Conjugation:	Unconjugated
Storage:	Store at -20°C as received.
Stability:	Stable for 12 months from date of receipt.
Predicted Protein Size:	65 kDa
Gene Name:	matrix metalloproteinase 14
Database Link:	NP_004986 Entrez Gene 17387 Mouse Entrez Gene 81707 Rat Entrez Gene 4323 Human P50281
Background:	MMP14 Seems to specifically activate progelatinase A. May thus trigger invasion by tumor cells by activating progelatinase A on the tumor cell surface. Belongs to the peptidase M10A family.
Synonyms:	MMP-14; MMP-X1; MT-MMP; MT-MMP 1; MT1-MMP; MT1MMP; MTMMP1; WNCHRS
Note:	MMP14 antibody detects endogenous levels of total MMP14
Protein Families:	Druggable Genome, Protease, Transmembrane



[View online »](#)

Protein Pathways: GnRH signaling pathway

Product images:



Western blot analysis on NIH-3T3 cell lysate using MMP14 Antibody