

Product datasheet for **TA347430**

MMP11 Rabbit Polyclonal Antibody

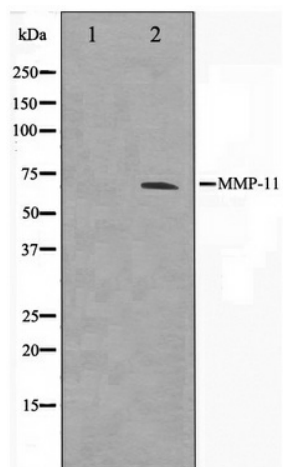
Product data:

Product Type:	Primary Antibodies
Applications:	WB
Recommended Dilution:	WB: 1:500-1:3000
Reactivity:	Human, Mouse, Rat
Host:	Rabbit
Isotype:	IgG
Clonality:	Polyclonal
Immunogen:	The immunogen for anti-MMP11 Antibody: A synthesized peptide derived from human MMP11
Formulation:	Rabbit IgG in phosphate buffered saline , pH 7.4, 150mM NaCl, 0.02% sodium azide and 50% glycerol. Store at -20?. Stable for 12 months from date of receipt
Concentration:	lot specific
Purification:	Affinity-chromatography
Conjugation:	Unconjugated
Storage:	Store at -20°C as received.
Stability:	Stable for 12 months from date of receipt.
Predicted Protein Size:	60 kDa
Gene Name:	matrix metalloproteinase 11
Database Link:	NP_005931 Entrez Gene 17385 Mouse Entrez Gene 25481 Rat Entrez Gene 4320 Human P24347
Background:	MMP11 May play an important role in the progression of epithelial malignancies. Belongs to the peptidase M10A family.
Synonyms:	SL-3; ST3; STMY3
Note:	MMP11 antibody detects endogenous levels of total MMP11
Protein Families:	Druggable Genome, Protease



[View online »](#)

Product images:



Western blot analysis on A549 cell lysate using
MMP11 Antibody