

Product datasheet for **TA347427**

MCM5 Rabbit Polyclonal Antibody

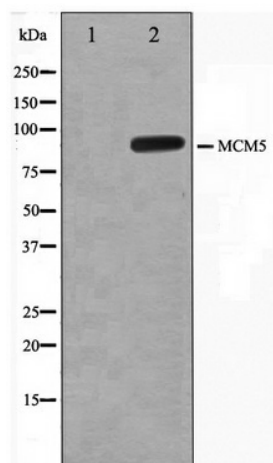
Product data:

Product Type:	Primary Antibodies
Applications:	WB
Recommended Dilution:	WB: 1:500-1:3000
Reactivity:	Human, Mouse, Rat
Host:	Rabbit
Isotype:	IgG
Clonality:	Polyclonal
Immunogen:	The immunogen for anti-MCM5 Antibody: A synthesized peptide derived from human MCM5
Formulation:	Rabbit IgG in phosphate buffered saline , pH 7.4, 150mM NaCl, 0.02% sodium azide and 50% glycerol. Store at -20?. Stable for 12 months from date of receipt
Concentration:	lot specific
Purification:	Affinity-chromatography
Conjugation:	Unconjugated
Storage:	Store at -20°C as received.
Stability:	Stable for 12 months from date of receipt.
Predicted Protein Size:	90 kDa
Gene Name:	minichromosome maintenance complex component 5
Database Link:	NP_006730 Entrez Gene 17218 MouseEntrez Gene 291885 RatEntrez Gene 4174 Human P33992
Background:	MCM5 Belongs to the MCM family
Synonyms:	CDC46; P1-CDC46
Note:	MCM5 antibody detects endogenous levels of total MCM5
Protein Families:	Stem cell - Pluripotency, Transcription Factors
Protein Pathways:	Cell cycle, DNA replication



[View online »](#)

Product images:



Western blot analysis on HepG2 cell lysate using MCM5 Antibody