

Product datasheet for **TA347425**

MCL1 Rabbit Polyclonal Antibody

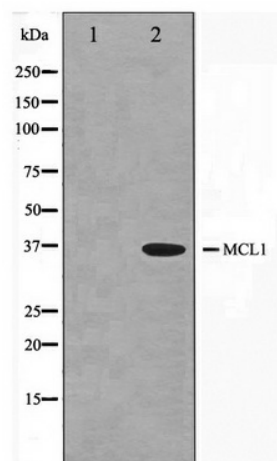
Product data:

Product Type:	Primary Antibodies
Applications:	WB
Recommended Dilution:	WB: 1:500-1:3000
Reactivity:	Human, Mouse, Rat
Host:	Rabbit
Isotype:	IgG
Clonality:	Polyclonal
Immunogen:	The immunogen for anti-MCL1 Antibody: A synthesized peptide derived from human MCL1
Formulation:	Rabbit IgG in phosphate buffered saline , pH 7.4, 150mM NaCl, 0.02% sodium azide and 50% glycerol. Store at -20?. Stable for 12 months from date of receipt
Concentration:	lot specific
Purification:	Affinity-chromatography
Conjugation:	Unconjugated
Storage:	Store at -20°C as received.
Stability:	Stable for 12 months from date of receipt.
Predicted Protein Size:	37 kDa,32 kDa
Gene Name:	myeloid cell leukemia 1
Database Link:	NP_068779 Entrez Gene 17210 Mouse Entrez Gene 60430 Rat Entrez Gene 4170 Human Q07820
Background:	MCL1 a myeloid cell leukemia protein of the Bcl-2 family of proteins. Two alternatively spliced transcripts encoding distinct isoforms have been identified. The longer gene product (isoform 1) enhances cell survival by inhibiting apoptosis while the alternatively spliced shorter gene product (isoform 2) promotes apoptosis and is death-inducing.
Synonyms:	bcl2-L-3; BCL2L3; EAT; Mcl-1; mcl1; MCL1-ES; MCL1L; MCL1S; TM
Note:	MCL1 antibody detects endogenous levels of total MCL1
Protein Families:	Druggable Genome, Transmembrane



[View online »](#)

Product images:



Western blot analysis on COS7 cell lysate using MCL1 Antibody