

## Product datasheet for **TA347424**

### MelanA (MLANA) Rabbit Polyclonal Antibody

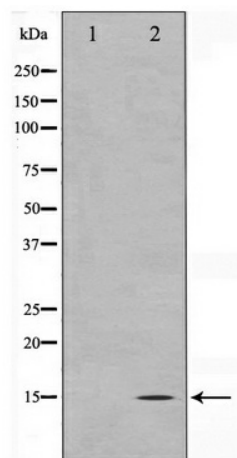
#### Product data:

Product Type:	Primary Antibodies
Applications:	WB
Recommended Dilution:	WB: 1:500-1:3000
Reactivity:	Human
Host:	Rabbit
Isotype:	IgG
Clonality:	Polyclonal
Immunogen:	The immunogen for anti-MLANA Antibody: A synthesized peptide derived from human MLANA
Formulation:	Rabbit IgG in phosphate buffered saline , pH 7.4, 150mM NaCl, 0.02% sodium azide and 50% glycerol. Store at -20?. Stable for 12 months from date of receipt
Concentration:	lot specific
Purification:	Affinity-chromatography
Conjugation:	Unconjugated
Storage:	Store at -20°C as received.
Stability:	Stable for 12 months from date of receipt.
Predicted Protein Size:	15 kDa
Gene Name:	melan-A
Database Link:	<a href="#">NP_005502</a> <a href="#">Entrez Gene 2315 Human</a> <a href="#">Q16655</a>
Background:	MLANA Plays a vital role in the expression, stability, trafficking, and processing of melanocyte protein SILV/PMEL17, which is critical to the formation of stage II melanosomes. Interacts with SILV/PMEL17.
Synonyms:	MART-1; MART1
Note:	MLANA antibody detects endogenous levels of total MLANA
Protein Families:	Transmembrane



[View online »](#)

## Product images:



Western blot analysis on NIH-3T3 cell lysate using  
MLANA Antibody