

Product datasheet for **TA347423**

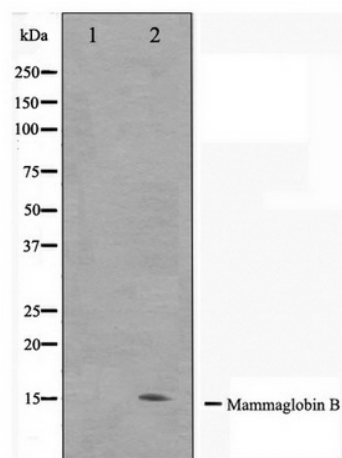
SCGB2A1 Rabbit Polyclonal Antibody

Product data:

Product Type:	Primary Antibodies
Applications:	WB
Recommended Dilution:	WB: 1:500-1:3000
Reactivity:	Human
Host:	Rabbit
Isotype:	IgG
Clonality:	Polyclonal
Immunogen:	The immunogen for anti-Mammaglobin B Antibody: A synthesized peptide derived from human Mammaglobin B
Formulation:	Rabbit IgG in phosphate buffered saline , pH 7.4, 150mM NaCl, 0.02% sodium azide and 50% glycerol. Store at -20?. Stable for 12 months from date of receipt
Concentration:	lot specific
Purification:	Affinity-chromatography
Conjugation:	Unconjugated
Storage:	Store at -20°C as received.
Stability:	Stable for 12 months from date of receipt.
Predicted Protein Size:	15 kDa
Gene Name:	secretoglobin family 2A member 1
Database Link:	NP_002398 Entrez Gene 4246 Human O75556
Background:	SCGB2A1 May bind androgens and other steroids, may also bind estramustine, a chemotherapeutic agent used for prostate cancer. May be under transcriptional regulation of steroid hormones. Belongs to the secretoglobin family. Lipophilin subfamily.
Synonyms:	LPHC; LPNC; MGB2; UGB3
Note:	Mammaglobin B antibody detects endogenous levels of total Mammaglobin B



[View online »](#)

Product images:

Western blot analysis on HepG2 cell lysate using Mammaglobin B Antibody