

Product datasheet for **TA347422**

Mammaglobin A (SCGB2A2) Rabbit Polyclonal Antibody

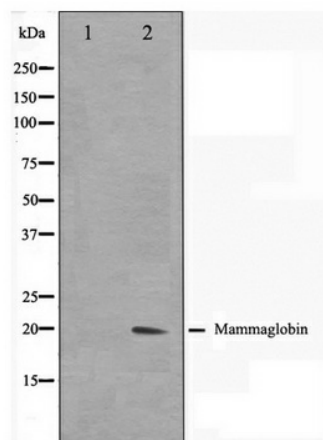
Product data:

Product Type:	Primary Antibodies
Applications:	WB
Recommended Dilution:	WB: 1:500-1:3000
Reactivity:	Human, Rat
Host:	Rabbit
Isotype:	IgG
Clonality:	Polyclonal
Immunogen:	The immunogen for anti-Mammaglobin Antibody: A synthesized peptide derived from human Mammaglobin
Formulation:	Rabbit IgG in phosphate buffered saline , pH 7.4, 150mM NaCl, 0.02% sodium azide and 50% glycerol. Store at -20?. Stable for 12 months from date of receipt
Concentration:	lot specific
Purification:	Affinity-chromatography
Conjugation:	Unconjugated
Storage:	Store at -20°C as received.
Stability:	Stable for 12 months from date of receipt.
Predicted Protein Size:	20 kDa
Gene Name:	secretoglobin family 2A member 2
Database Link:	NP_002402 Entrez Gene 361725 Rat Entrez Gene 4250 Human Q13296
Background:	SCGB2A2 Belongs to the secretoglobin family. Lipophilin subfamily. 2 isoforms of the human protein are produced by alternative splicing.
Synonyms:	MGB1; UGB2
Note:	Mammaglobin antibody detects endogenous levels of total Mammaglobin



[View online »](#)

Product images:



Western blot analysis on HepG2 cell lysate using Mammaglobin Antibody