

Product datasheet for **TA347421**

Ku70 (XRCC6) Rabbit Polyclonal Antibody

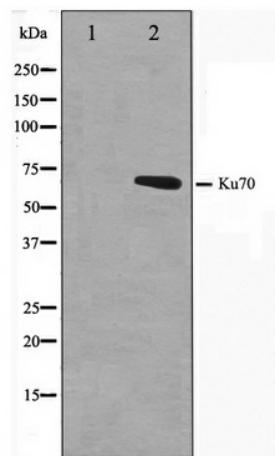
Product data:

| | |
|--------------------------------|---|
| Product Type: | Primary Antibodies |
| Applications: | WB |
| Recommended Dilution: | WB: 1:500-1:3000 |
| Reactivity: | Human, Mouse, Rat |
| Host: | Rabbit |
| Isotype: | IgG |
| Clonality: | Polyclonal |
| Immunogen: | The immunogen for anti-Ku70 Antibody: A synthesized peptide derived from human Ku70 |
| Formulation: | Rabbit IgG in phosphate buffered saline , pH 7.4, 150mM NaCl, 0.02% sodium azide and 50% glycerol. Store at -20?. Stable for 12 months from date of receipt |
| Concentration: | lot specific |
| Purification: | Affinity-chromatography |
| Conjugation: | Unconjugated |
| Storage: | Store at -20°C as received. |
| Stability: | Stable for 12 months from date of receipt. |
| Predicted Protein Size: | 70 kDa |
| Gene Name: | X-ray repair complementing defective repair in Chinese hamster cells 6 |
| Database Link: | NP_001460 Entrez Gene 14375 Mouse Entrez Gene 25019 Rat Entrez Gene 2547 Human P12956 |
| Background: | Ku70 a mini-chromosome maintenance protein, essential for the initiation of eukaryotic genome replication. Allows DNA to undergo a single round of replication per cell cycle. Required for the entry in S phase and for cell division. |
| Synonyms: | CTC75; CTCBF; G22P1; KU70; ML8; TLAA |
| Note: | Ku70 antibody detects endogenous levels of total Ku70 |
| Protein Families: | Druggable Genome, Transcription Factors |
| Protein Pathways: | Non-homologous end-joining |



[View online »](#)

Product images:



Western blot analysis on HeLa cell lysate using Ku70 Antibody