

Product datasheet for **TA347420**

Ku80 (XRCC5) Rabbit Polyclonal Antibody

Product data:

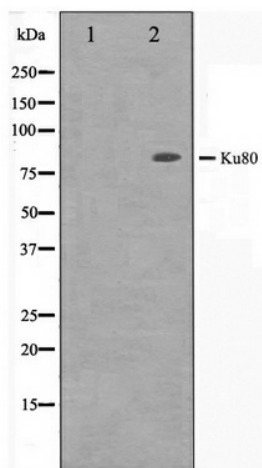
Product Type:	Primary Antibodies
Applications:	WB
Recommended Dilution:	WB: 1:500-1:3000
Reactivity:	Human
Host:	Rabbit
Isotype:	IgG
Clonality:	Polyclonal
Immunogen:	The immunogen for anti-Ku80 Antibody: A synthesized peptide derived from human Ku80
Formulation:	Rabbit IgG in phosphate buffered saline , pH 7.4, 150mM NaCl, 0.02% sodium azide and 50% glycerol. Store at -20?. Stable for 12 months from date of receipt
Concentration:	lot specific
Purification:	Affinity-chromatography
Conjugation:	Unconjugated
Storage:	Store at -20°C as received.
Stability:	Stable for 12 months from date of receipt.
Predicted Protein Size:	70 kDa,82 kDa
Gene Name:	X-ray repair complementing defective repair in Chinese hamster cells 5
Database Link:	NP_066964 Entrez Gene 7520 Human P13010
Background:	Ku80 the 80-kilodalton subunit of the Ku complex, also known as ATP-dependant DNA helicase II. A single stranded DNA-dependent ATP-dependent helicase. It functions together with the DNA ligase IV-XRCC4 complex in the repair of DNA double-strand break by non-homologous end joining and the completion of V(D)J recombination events.
Synonyms:	KARP-1; KARP1; KU80; Ku86; KUB2; NFIV
Note:	Ku80 antibody detects endogenous levels of total Ku80
Protein Families:	Druggable Genome, Stem cell - Pluripotency



[View online »](#)

Protein Pathways: Non-homologous end-joining

Product images:



Western blot analysis on COS7 cell lysate using Ku80 Antibody