

Product datasheet for **TA347419**

iNOS (NOS2) Rabbit Polyclonal Antibody

Product data:

Product Type:	Primary Antibodies
Applications:	WB
Recommended Dilution:	WB: 1:500-1:3000
Reactivity:	Human
Host:	Rabbit
Isotype:	IgG
Clonality:	Polyclonal
Immunogen:	The immunogen for anti-iNOS Antibody: A synthesized peptide derived from human iNOS
Formulation:	Rabbit IgG in phosphate buffered saline , pH 7.4, 150mM NaCl, 0.02% sodium azide and 50% glycerol. Store at -20?. Stable for 12 months from date of receipt
Concentration:	lot specific
Purification:	Affinity-chromatography
Conjugation:	Unconjugated
Storage:	Store at -20°C as received.
Stability:	Stable for 12 months from date of receipt.
Predicted Protein Size:	130 kDa
Gene Name:	nitric oxide synthase 2
Database Link:	NP_000616 Entrez Gene 4843 Human P35228
Background:	iNOS Produces nitric oxide (NO) which is a messenger molecule with diverse functions throughout the body. In macrophages, NO mediates tumoricidal and bactericidal actions. Belongs to the NOS family. Induced by endotoxins and cytokines. Induced by interferon gamma acting synergistically with lipopolysaccharide, tumor necrosis factor alpha or interleukin-1 beta. Homodimer. Binds SLC9A3R1. 2 isoforms of the human protein are produced by alternative splicing.
Synonyms:	HEP-NOS; INOS; NOS; NOS2A



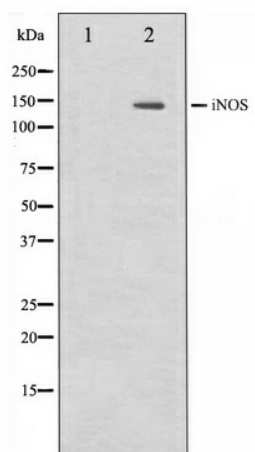
[View online »](#)

Note: iNOS antibody detects endogenous levels of total iNOS

Protein Families: Druggable Genome

Protein Pathways: Alzheimer's disease, Amyotrophic lateral sclerosis (ALS), Arginine and proline metabolism, Calcium signaling pathway, Long-term depression, Metabolic pathways, Pathways in cancer, Small cell lung cancer

Product images:



Western blot analysis on NIH-3T3 cell lysate using iNOS Antibody