

Product datasheet for **TA347417**

Cytokeratin 8 (KRT8) Rabbit Polyclonal Antibody

Product data:

Product Type:	Primary Antibodies
Applications:	WB
Recommended Dilution:	WB: 1:500-1:3000
Reactivity:	Human, Mouse, Rat
Host:	Rabbit
Isotype:	IgG
Clonality:	Polyclonal
Immunogen:	The immunogen for anti-Keratin 8 Antibody: A synthesized peptide derived from human Keratin 8
Formulation:	Rabbit IgG in phosphate buffered saline , pH 7.4, 150mM NaCl, 0.02% sodium azide and 50% glycerol. Store at -20?. Stable for 12 months from date of receipt
Concentration:	lot specific
Purification:	Affinity-chromatography
Conjugation:	Unconjugated
Storage:	Store at -20°C as received.
Stability:	Stable for 12 months from date of receipt.
Predicted Protein Size:	55 kDa
Gene Name:	keratin 8
Database Link:	NP_002264 Entrez Gene 16691 Mouse Entrez Gene 25626 Rat Entrez Gene 3856 Human P05787
Background:	K8 a type II cytoskeletal keratin. The keratins are intermediate filament proteins responsible for the structural integrity of epithelial cells and are subdivided into cytokeratins and hair keratins. Phosphorylation of keratins at specific sites affects their organization, assembly dynamics, and their interaction with signaling molecules. Phosphorylated by p38 kinase, regulating cellular keratin filament reorganization.
Synonyms:	CARD2; CK-8; CK8; CYK8; K2C8; K8; KO

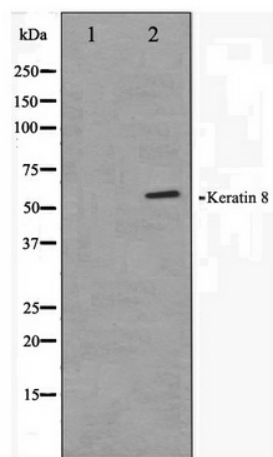


[View online »](#)

Note: Keratin 8 antibody detects endogenous levels of total Keratin 8

Protein Families: Druggable Genome

Product images:



Western blot analysis on 293 cell lysate using Keratin 8 Antibody