

## Product datasheet for **TA347415**

### Cytokeratin 5 (KRT5) Rabbit Polyclonal Antibody

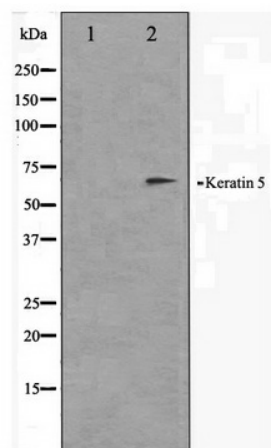
#### Product data:

Product Type:	Primary Antibodies
Applications:	WB
Recommended Dilution:	WB: 1:500-1:3000
Reactivity:	Human, Mouse, Rat
Host:	Rabbit
Isotype:	IgG
Clonality:	Polyclonal
Immunogen:	The immunogen for anti-Keratin 5 Antibody: A synthesized peptide derived from human Keratin 5
Formulation:	Rabbit IgG in phosphate buffered saline , pH 7.4, 150mM NaCl, 0.02% sodium azide and 50% glycerol. Store at -20?. Stable for 12 months from date of receipt
Concentration:	lot specific
Purification:	Affinity-chromatography
Conjugation:	Unconjugated
Storage:	Store at -20°C as received.
Stability:	Stable for 12 months from date of receipt.
Predicted Protein Size:	62 kDa
Gene Name:	keratin 5
Database Link:	<a href="#">NP_000415</a> <a href="#">Entrez Gene 110308 MouseEntrez Gene 369017 RatEntrez Gene 3852 Human P13647</a>
Background:	K5 Belongs to the intermediate filament family. Heterotetramer of two type I and two type II keratins. Keratin-5 associates with keratin-14. Interacts with TCHP.
Synonyms:	CK5; DDD; DDD1; EBS2; K5; KRT5A
Note:	Keratin 5 antibody detects endogenous levels of total Keratin 5



[View online »](#)

## Product images:



Western blot analysis on HepG2 cell lysate using Keratin 5 Antibody