

## Product datasheet for **TA347414**

### Cytokeratin 20 (KRT20) Rabbit Polyclonal Antibody

#### Product data:

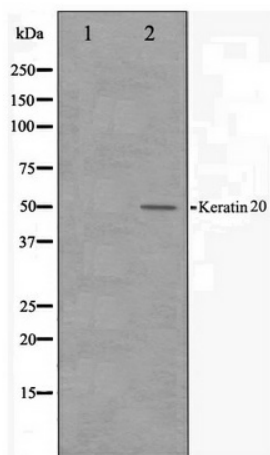
Product Type:	Primary Antibodies
Applications:	WB
Recommended Dilution:	WB: 1:500-1:3000
Reactivity:	Human, Mouse, Rat
Host:	Rabbit
Isotype:	IgG
Clonality:	Polyclonal
Immunogen:	The immunogen for anti-Keratin 20 Antibody: A synthesized peptide derived from human Keratin 20
Formulation:	Rabbit IgG in phosphate buffered saline , pH 7.4, 150mM NaCl, 0.02% sodium azide and 50% glycerol. Store at -20?. Stable for 12 months from date of receipt
Concentration:	lot specific
Purification:	Affinity-chromatography
Conjugation:	Unconjugated
Storage:	Store at -20°C as received.
Stability:	Stable for 12 months from date of receipt.
Predicted Protein Size:	49 kDa
Gene Name:	keratin 20
Database Link:	<a href="#">NP_061883</a> <a href="#">Entrez Gene 66809 Mouse</a> <a href="#">Entrez Gene 286912 Rat</a> <a href="#">Entrez Gene 54474 Human</a> <a href="#">P35900</a>
Background:	K20 a type I cytoskeletal keratin. The keratins are intermediate filament proteins responsible for the structural integrity of epithelial cells and are subdivided into cytokeratins and hair keratins. There are two types of cytoskeletal and microfibrillar keratin: type I (acidic; 40-55 kDa) [K9 to K20] and type II (neutral to basic; 56-70 kDa) [K1 to K8]. Both a basic and an acidic keratin are required for filament assembly.
Synonyms:	CD20; CK-20; CK20; K20; KRT21



[View online »](#)

**Note:** Keratin 20 antibody detects endogenous levels of total Keratin 20

**Product images:**



Western blot analysis on HeLa cell lysate using Keratin 20 Antibody