

Product datasheet for **TA347413**

Cytokeratin 19 (KRT19) Rabbit Polyclonal Antibody

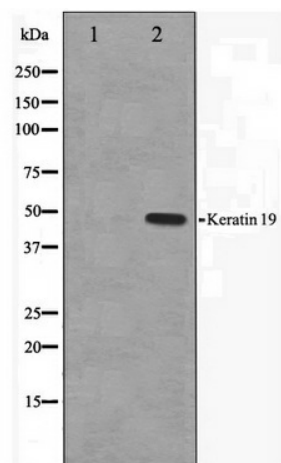
Product data:

Product Type:	Primary Antibodies
Applications:	WB
Recommended Dilution:	WB: 1:500-1:3000
Reactivity:	Human, Mouse, Rat
Host:	Rabbit
Isotype:	IgG
Clonality:	Polyclonal
Immunogen:	The immunogen for anti-Keratin 19 Antibody: A synthesized peptide derived from human Keratin 19
Formulation:	Rabbit IgG in phosphate buffered saline , pH 7.4, 150mM NaCl, 0.02% sodium azide and 50% glycerol. Store at -20?. Stable for 12 months from date of receipt
Concentration:	lot specific
Purification:	Affinity-chromatography
Conjugation:	Unconjugated
Storage:	Store at -20°C as received.
Stability:	Stable for 12 months from date of receipt.
Predicted Protein Size:	44 kDa
Gene Name:	keratin 19
Database Link:	NP_002267 Entrez Gene 16669 MouseEntrez Gene 360626 RatEntrez Gene 3880 Human P08727
Background:	K19 a type I cytoskeletal keratin. The keratins are intermediate filament proteins responsible for the structural integrity of epithelial cells and are subdivided into cytokeratins and hair keratins. Keratin 19 differs from all other IF proteins in lacking the C-terminal tail domain.
Synonyms:	CK19; K1CS; K19
Note:	Keratin 19 antibody detects endogenous levels of total Keratin 19



[View online »](#)

Product images:



Western blot analysis on LOVO cell lysate using Keratin 19 Antibody