

Product datasheet for **TA347409**

JM4 (PRAF2) Rabbit Polyclonal Antibody

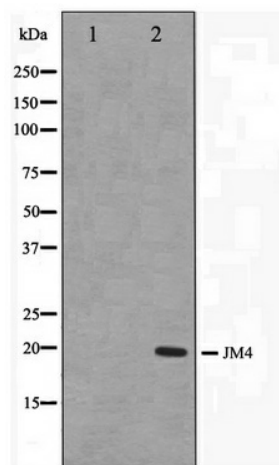
Product data:

Product Type:	Primary Antibodies
Applications:	WB
Recommended Dilution:	WB: 1:500-1:3000
Reactivity:	Human, Mouse, Rat
Host:	Rabbit
Isotype:	IgG
Clonality:	Polyclonal
Immunogen:	The immunogen for anti-JM4 Antibody: A synthesized peptide derived from human JM4
Formulation:	Rabbit IgG in phosphate buffered saline , pH 7.4, 150mM NaCl, 0.02% sodium azide and 50% glycerol. Store at -20?. Stable for 12 months from date of receipt
Concentration:	lot specific
Purification:	Affinity-chromatography
Conjugation:	Unconjugated
Storage:	Store at -20°C as received.
Stability:	Stable for 12 months from date of receipt.
Predicted Protein Size:	20 kDa
Gene Name:	PRA1 domain family member 2
Database Link:	NP_009144 Entrez Gene 54637 MouseEntrez Gene 367743 RatEntrez Gene 11230 Human O60831
Background:	PRAF2 May be involved in ER/Golgi transport and vesicular traffic. Plays a proapoptotic role in cerulenin-induced neuroblastoma apoptosis. Interacts with CCR5 and GDE1. Belongs to the PRA1 family.
Synonyms:	JM4; Yip6a
Note:	JM4 antibody detects endogenous levels of total JM4
Protein Families:	Transmembrane



[View online »](#)

Product images:



Western blot analysis on LOVO cell lysate using JM4 Antibody