

Product datasheet for **TA347407**

Involucrin (IVL) Rabbit Polyclonal Antibody

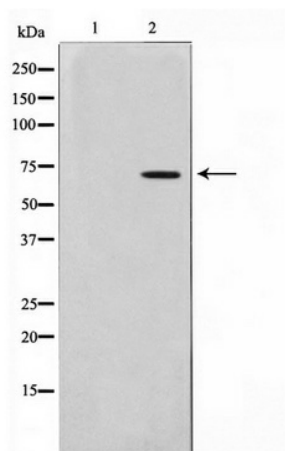
Product data:

Product Type:	Primary Antibodies
Applications:	WB
Recommended Dilution:	WB: 1:500-1:3000
Reactivity:	Human
Host:	Rabbit
Isotype:	IgG
Clonality:	Polyclonal
Immunogen:	The immunogen for anti-Involucrin Antibody: A synthesized peptide derived from human Involucrin
Formulation:	Rabbit IgG in phosphate buffered saline , pH 7.4, 150mM NaCl, 0.02% sodium azide and 50% glycerol. Store at -20?. Stable for 12 months from date of receipt
Concentration:	lot specific
Purification:	Affinity-chromatography
Conjugation:	Unconjugated
Storage:	Store at -20°C as received.
Stability:	Stable for 12 months from date of receipt.
Predicted Protein Size:	68 kDa
Gene Name:	involucrin
Database Link:	NP_005538 Entrez Gene 3713 Human P07476
Background:	IVL Part of the insoluble cornified cell envelope (CE) of stratified squamous epithelia. Belongs to the involucrin family. Directly or indirectly cross-linked to cornifelin (CNFN).
Synonyms:	involucrin; OTTHUMP00000014402
Note:	Involucrin antibody detects endogenous levels of total Involucrin



[View online »](#)

Product images:



Western blot analysis on HuvEc cell lysate using Involucrin Antibody