

Product datasheet for **TA347406**

Integrin beta 5 (ITGB5) Rabbit Polyclonal Antibody

Product data:

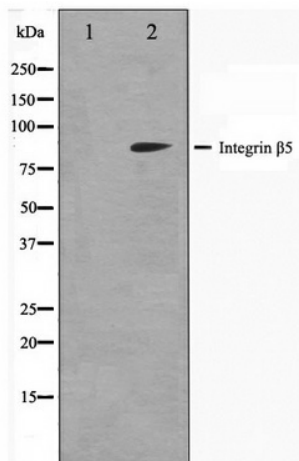
Product Type:	Primary Antibodies
Applications:	WB
Recommended Dilution:	WB: 1:500-1:3000
Reactivity:	Human, Mouse, Rat
Host:	Rabbit
Isotype:	IgG
Clonality:	Polyclonal
Immunogen:	The immunogen for anti-Integrin beta-5 Antibody: A synthesized peptide derived from human Integrin beta-5
Formulation:	Rabbit IgG in phosphate buffered saline , pH 7.4, 150mM NaCl, 0.02% sodium azide and 50% glycerol. Store at -20?. Stable for 12 months from date of receipt
Concentration:	lot specific
Purification:	Affinity-chromatography
Conjugation:	Unconjugated
Storage:	Store at -20°C as received.
Stability:	Stable for 12 months from date of receipt.
Predicted Protein Size:	88 kDa
Gene Name:	integrin subunit beta 5
Database Link:	NP_002204 Entrez Gene 16419 Mouse Entrez Gene 257645 Rat Entrez Gene 3693 Human P18084
Background:	ITGB5 Integrin alpha-V/beta-5 is a receptor for fibronectin. It recognizes the sequence R-G-D in its ligand. Belongs to the integrin beta chain family. Heterodimer of an alpha and a beta subunit. Beta-5 associates with alpha-V.
Synonyms:	FLJ26658
Note:	Integrin beta-5 antibody detects endogenous levels of total Integrin beta-5
Protein Families:	Druggable Genome, Transmembrane



[View online »](#)

Protein Pathways:

Arrhythmogenic right ventricular cardiomyopathy (ARVC), Dilated cardiomyopathy, ECM-receptor interaction, Focal adhesion, Hypertrophic cardiomyopathy (HCM), Regulation of actin cytoskeleton

Product images:

Western blot analysis on COS7 cell lysate using Integrin beta-5 Antibody