

Product datasheet for **TA347405**

Hsp60 (HSPD1) Rabbit Polyclonal Antibody

Product data:

Product Type:	Primary Antibodies
Applications:	WB
Recommended Dilution:	WB: 1:500-1:3000
Reactivity:	Human, Mouse, Rat
Host:	Rabbit
Isotype:	IgG
Clonality:	Polyclonal
Immunogen:	The immunogen for anti-HSP60 Antibody: A synthesized peptide derived from human HSP60
Formulation:	Rabbit IgG in phosphate buffered saline , pH 7.4, 150mM NaCl, 0.02% sodium azide and 50% glycerol. Store at -20?. Stable for 12 months from date of receipt
Concentration:	lot specific
Purification:	Affinity-chromatography
Conjugation:	Unconjugated
Storage:	Store at -20°C as received.
Stability:	Stable for 12 months from date of receipt.
Predicted Protein Size:	68 kDa
Gene Name:	heat shock protein family D (Hsp60) member 1
Database Link:	NP_002147 Entrez Gene 15510 Mouse Entrez Gene 63868 Rat Entrez Gene 3329 Human P10809
Background:	HSP60 Implicated in mitochondrial protein import and macromolecular assembly. May facilitate the correct folding of imported proteins. May also prevent misfolding and promote the refolding and proper assembly of unfolded polypeptides generated under stress conditions in the mitochondrial matrix. Belongs to the chaperonin (HSP60) family. Interacts with HBV protein X and HTLV-1 protein p40tax.
Synonyms:	CPN60; GROEL; HLD4; HSP-60; HSP60; HSP65; HuCHA60; SPG13
Note:	HSP60 antibody detects endogenous levels of total HSP60

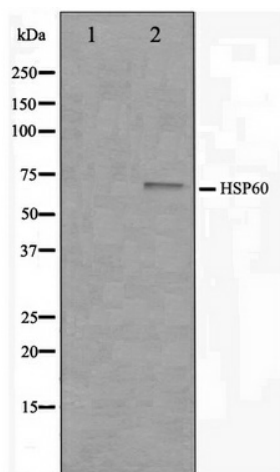


[View online »](#)

Protein Families: Druggable Genome, Stem cell - Pluripotency

Protein Pathways: RNA degradation, Type I diabetes mellitus

Product images:



Western blot analysis on COLO205 cell lysate using HSP60 Antibody