

Product datasheet for **TA347404**

Cpn10 (HSPE1) Rabbit Polyclonal Antibody

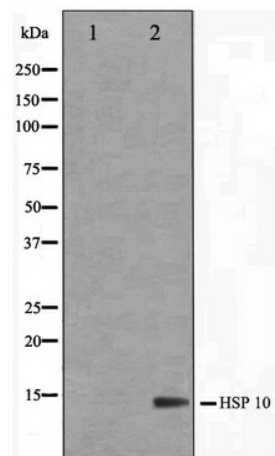
Product data:

Product Type:	Primary Antibodies
Applications:	WB
Recommended Dilution:	WB: 1:500-1:3000
Reactivity:	Human, Mouse, Rat
Host:	Rabbit
Isotype:	IgG
Clonality:	Polyclonal
Immunogen:	The immunogen for anti-HSP10 Antibody: A synthesized peptide derived from human HSP10
Formulation:	Rabbit IgG in phosphate buffered saline , pH 7.4, 150mM NaCl, 0.02% sodium azide and 50% glycerol. Store at -20?. Stable for 12 months from date of receipt
Concentration:	lot specific
Purification:	Affinity-chromatography
Conjugation:	Unconjugated
Storage:	Store at -20°C as received.
Stability:	Stable for 12 months from date of receipt.
Predicted Protein Size:	10 kDa
Gene Name:	heat shock protein family E (Hsp10) member 1
Database Link:	NP_002148 Entrez Gene 15528 MouseEntrez Gene 25462 RatEntrez Gene 3336 Human P61604
Background:	HSPE1 Eukaryotic CPN10 homolog which is essential for mitochondrial protein biogenesis, together with CPN60. Binds to CPN60 in the presence of Mg-ATP and suppresses the ATPase activity of the latter. Belongs to the groES chaperonin family. Induced by stress. Homohexamer.
Synonyms:	CPN10; EPF; GROES; HSP10
Note:	HSP10 antibody detects endogenous levels of total HSP10
Protein Families:	Druggable Genome, Stem cell - Pluripotency



[View online »](#)

Product images:



Western blot analysis on NIH-3T3 cell lysate using HSP10 Antibody