

Product datasheet for **TA347403**

NRG1 Rabbit Polyclonal Antibody

Product data:

Product Type:	Primary Antibodies
Applications:	WB
Recommended Dilution:	WB: 1:500-1:3000
Reactivity:	Human, Mouse, Rat
Host:	Rabbit
Isotype:	IgG
Clonality:	Polyclonal
Immunogen:	The immunogen for anti-NRG1 isoform-10 Antibody: A synthesized peptide derived from human NRG1 isoform-10
Formulation:	Rabbit IgG in phosphate buffered saline , pH 7.4, 150mM NaCl, 0.02% sodium azide and 50% glycerol. Store at -20?. Stable for 12 months from date of receipt
Concentration:	lot specific
Purification:	Affinity-chromatography
Conjugation:	Unconjugated
Storage:	Store at -20°C as received.
Stability:	Stable for 12 months from date of receipt.
Predicted Protein Size:	44 kDa
Gene Name:	neuregulin 1
Database Link:	NP_039250 Entrez Gene 112400 Rat Entrez Gene 211323 Mouse Entrez Gene 3084 Human Q02297
Background:	NRG1 Direct ligand for ERBB3 and ERBB4 tyrosine kinase receptors. Concomitantly recruits ERBB1 and ERBB2 coreceptors, resulting in ligand-stimulated tyrosine phosphorylation and activation of the ERBB receptors. The multiple isoforms perform diverse functions such as inducing growth and differentiation of epithelial, glial, neuronal, and skeletal muscle cells;
Synonyms:	ARIA; GGF; GGF2; HGL; HRG; HRG1; HRGA; MST131; MSTP131; NDF; NRG1-IT2; SMDF
Note:	NRG1 isoform-10 antibody detects endogenous levels of total NRG1 isoform-10

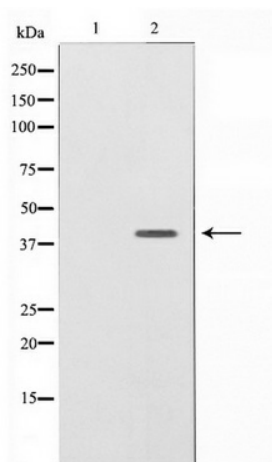


[View online »](#)

Protein Families: Druggable Genome, Secreted Protein, Transcription Factors, Transmembrane

Protein Pathways: ErbB signaling pathway

Product images:



Western blot analysis on SK-OV3 cell lysate using NRG1 isoform-10 Antibody