

## Product datasheet for **TA347398**

### hCG beta (CGB3) Rabbit Polyclonal Antibody

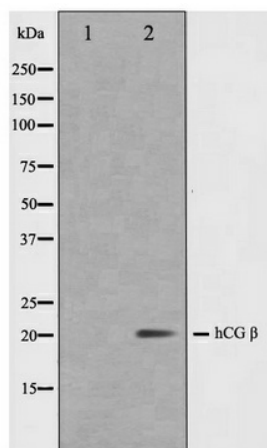
#### Product data:

Product Type:	Primary Antibodies
Applications:	WB
Recommended Dilution:	WB: 1:500-1:3000
Reactivity:	Human
Host:	Rabbit
Isotype:	IgG
Clonality:	Polyclonal
Immunogen:	The immunogen for anti-hCG beta Antibody: A synthesized peptide derived from human hCG beta
Formulation:	Rabbit IgG in phosphate buffered saline , pH 7.4, 150mM NaCl, 0.02% sodium azide and 50% glycerol. Store at -20?. Stable for 12 months from date of receipt
Concentration:	lot specific
Purification:	Affinity-chromatography
Conjugation:	Unconjugated
Storage:	Store at -20°C as received.
Stability:	Stable for 12 months from date of receipt.
Predicted Protein Size:	20 kDa
Gene Name:	chorionic gonadotropin beta subunit 3
Database Link:	<a href="#">NP_000728</a> <a href="#">Entrez Gene 1082 Human</a> <a href="#">P0DN86</a>
Background:	Stimulates the ovaries to synthesize the steroids that are essential for the maintenance of pregnancy.
Synonyms:	CGB3; CGB5; CGB7; CGB8; hCGB
Note:	hCG beta antibody detects endogenous levels of total hCG beta
Protein Families:	Druggable Genome



[View online »](#)

## Product images:



Western blot analysis on NIH-3T3 cell lysate using hCG beta Antibody