

## Product datasheet for **TA347396**

### Granzyme B (GZMB) Rabbit Polyclonal Antibody

#### Product data:

Product Type:	Primary Antibodies
Applications:	WB
Recommended Dilution:	WB: 1:500-1:3000
Reactivity:	Human, Mouse, Rat
Host:	Rabbit
Isotype:	IgG
Clonality:	Polyclonal
Immunogen:	The immunogen for anti-Granzyme B Antibody: A synthesized peptide derived from human Granzyme B
Formulation:	Rabbit IgG in phosphate buffered saline , pH 7.4, 150mM NaCl, 0.02% sodium azide and 50% glycerol. Store at -20?. Stable for 12 months from date of receipt
Concentration:	lot specific
Purification:	Affinity-chromatography
Conjugation:	Unconjugated
Storage:	Store at -20°C as received.
Stability:	Stable for 12 months from date of receipt.
Predicted Protein Size:	28 kDa
Gene Name:	granzyme B
Database Link:	<a href="#">NP_004122</a> <a href="#">Entrez Gene 14939 Mouse</a> <a href="#">Entrez Gene 171528 Rat</a> <a href="#">Entrez Gene 3002 Human</a> <a href="#">P10144</a>
Background:	GZMB This enzyme is necessary for target cell lysis in cell- mediated immune responses. It cleaves after Asp. Seems to be linked to an activation cascade of caspases (aspartate-specific cysteine proteases) responsible for apoptosis execution. Cleaves caspase-3, -7, -9 and 10 to give rise to active enzymes mediating apoptosis. Belongs to the peptidase S1 family. Granzyme subfamily. Induced by staphylococcal enterotoxin A (SEA) in peripheral blood leukocytes.
Synonyms:	C11; CCPI; CGL-1; CGL1; CSP-B; CSPB; CTLA1; CTSLG1; HLP; SECT



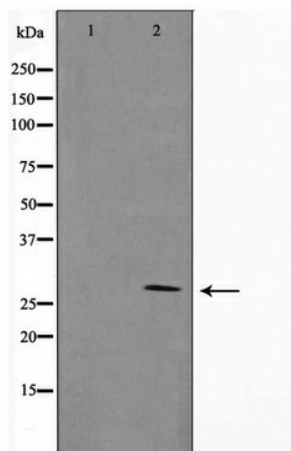
[View online »](#)

**Note:** Granzyme B antibody detects endogenous levels of total Granzyme B

**Protein Families:** Druggable Genome, Protease

**Protein Pathways:** Allograft rejection, Autoimmune thyroid disease, Graft-versus-host disease, Natural killer cell mediated cytotoxicity, Type I diabetes mellitus

**Product images:**



Western blot analysis on NIH-3T3 cell lysate using Granzyme B Antibody