

## Product datasheet for **TA347393**

### Metabotropic Glutamate Receptor 8 (GRM8) Rabbit Polyclonal Antibody

#### Product data:

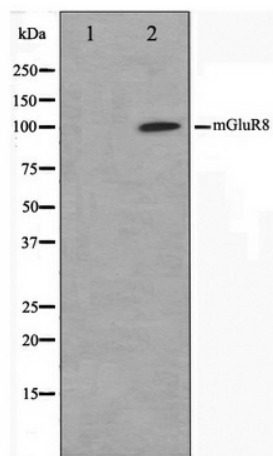
Product Type:	Primary Antibodies
Applications:	WB
Recommended Dilution:	WB: 1:500-1:3000
Reactivity:	Human, Mouse, Rat
Host:	Rabbit
Isotype:	IgG
Clonality:	Polyclonal
Immunogen:	The immunogen for anti-mGluR8 Antibody: A synthesized peptide derived from human mGluR8
Formulation:	Rabbit IgG in phosphate buffered saline , pH 7.4, 150mM NaCl, 0.02% sodium azide and 50% glycerol. Store at -20?. Stable for 12 months from date of receipt
Concentration:	lot specific
Purification:	Affinity-chromatography
Conjugation:	Unconjugated
Storage:	Store at -20°C as received.
Stability:	Stable for 12 months from date of receipt.
Predicted Protein Size:	100 kDa
Gene Name:	glutamate metabotropic receptor 8
Database Link:	<a href="#">NP_000836</a> <a href="#">Entrez Gene 14823 Mouse</a> <a href="#">Entrez Gene 60590 Rat</a> <a href="#">Entrez Gene 2918 Human</a> <a href="#">O00222</a>
Background:	mGluR8 Receptor for glutamate. The activity of this receptor is mediated by a G-protein that inhibits adenylate cyclase activity. Belongs to the G-protein coupled receptor 3 family. Interacts with PICK1. 3 isoforms of the human protein are produced by alternative splicing
Synonyms:	GLUR8; GPRC1H; mGlu8; MGLUR8
Note:	mGluR8 antibody detects endogenous levels of total mGluR8
Protein Families:	Druggable Genome, GPCR, Transmembrane



[View online »](#)

Protein Pathways: Neuroactive ligand-receptor interaction

**Product images:**



Western blot analysis on mouse brain cell lysate using mGluR8 Antibody