

## Product datasheet for **TA347392**

### Metabotropic Glutamate Receptor 7 (GRM7) Rabbit Polyclonal Antibody

#### Product data:

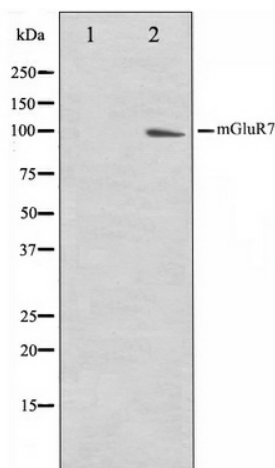
Product Type:	Primary Antibodies
Applications:	WB
Recommended Dilution:	WB: 1:500-1:3000
Reactivity:	Human, Mouse, Rat
Host:	Rabbit
Isotype:	IgG
Clonality:	Polyclonal
Immunogen:	The immunogen for anti-mGluR7 Antibody: A synthesized peptide derived from human mGluR7
Formulation:	Rabbit IgG in phosphate buffered saline , pH 7.4, 150mM NaCl, 0.02% sodium azide and 50% glycerol. Store at -20?. Stable for 12 months from date of receipt
Concentration:	lot specific
Purification:	Affinity-chromatography
Conjugation:	Unconjugated
Storage:	Store at -20°C as received.
Stability:	Stable for 12 months from date of receipt.
Predicted Protein Size:	100 kDa
Gene Name:	glutamate metabotropic receptor 7
Database Link:	<a href="#">NP_000835</a> <a href="#">Entrez Gene 81672 Rat</a> <a href="#">Entrez Gene 108073 Mouse</a> <a href="#">Entrez Gene 2917 Human</a> <a href="#">Q14831</a>
Background:	mGluR7 Receptor for glutamate. The activity of this receptor is mediated by a G-protein that inhibits adenylate cyclase activity. Belongs to the G-protein coupled receptor 3 family. Interacts with PICK1. 5 isoforms of the human protein are produced by alternative splicing.
Synonyms:	GLUR7; GPRC1G; MGLU7; MGLUR7; PPP1R87
Note:	mGluR7 antibody detects endogenous levels of total mGluR7
Protein Families:	Druggable Genome, GPCR, Transmembrane



[View online »](#)

Protein Pathways: Neuroactive ligand-receptor interaction

### Product images:



Western blot analysis on HuvEc cell lysate using mGluR7 Antibody