

Product datasheet for **TA347391**

Metabotropic Glutamate Receptor 6 (GRM6) Rabbit Polyclonal Antibody

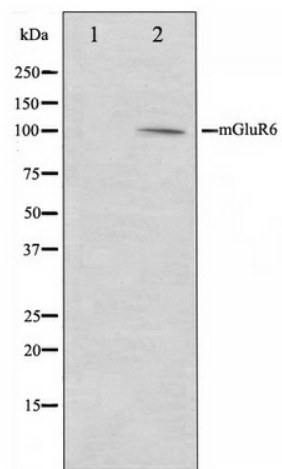
Product data:

Product Type:	Primary Antibodies
Applications:	WB
Recommended Dilution:	WB: 1:500-1:3000
Reactivity:	Human
Host:	Rabbit
Isotype:	IgG
Clonality:	Polyclonal
Immunogen:	The immunogen for anti-mGluR6 Antibody: A synthesized peptide derived from human mGluR6
Formulation:	Rabbit IgG in phosphate buffered saline , pH 7.4, 150mM NaCl, 0.02% sodium azide and 50% glycerol. Store at -20?. Stable for 12 months from date of receipt
Concentration:	lot specific
Purification:	Affinity-chromatography
Conjugation:	Unconjugated
Storage:	Store at -20°C as received.
Stability:	Stable for 12 months from date of receipt.
Predicted Protein Size:	100 kDa
Gene Name:	glutamate metabotropic receptor 6
Database Link:	NP_000834 Entrez Gene 2916 Human O15303
Background:	mGluR6 Receptor for glutamate. The activity of this receptor is mediated by a G-protein that inhibits adenylate cyclase activity. Belongs to the G-protein coupled receptor 3 family.
Synonyms:	CSNB1B; GPRC1F; mGlu6; MGLUR6
Note:	mGluR6 antibody detects endogenous levels of total mGluR6
Protein Families:	Druggable Genome, Transmembrane
Protein Pathways:	Neuroactive ligand-receptor interaction



[View online »](#)

Product images:



Western blot analysis on mouse brain cell lysate using mGluR6 Antibody