

## Product datasheet for **TA347387**

### GLP1 (GCG) Rabbit Polyclonal Antibody

#### Product data:

Product Type:	Primary Antibodies
Applications:	WB
Recommended Dilution:	WB: 1:500-1:3000
Reactivity:	Human, Mouse, Rat
Host:	Rabbit
Isotype:	IgG
Clonality:	Polyclonal
Immunogen:	The immunogen for anti-Glucagon Antibody: A synthesized peptide derived from human Glucagon
Formulation:	Rabbit IgG in phosphate buffered saline , pH 7.4, 150mM NaCl, 0.02% sodium azide and 50% glycerol. Store at -20?. Stable for 12 months from date of receipt
Concentration:	lot specific
Purification:	Affinity-chromatography
Conjugation:	Unconjugated
Storage:	Store at -20°C as received.
Stability:	Stable for 12 months from date of receipt.
Predicted Protein Size:	25 kDa
Gene Name:	glucagon
Database Link:	<a href="#">NP_002045</a> <a href="#">Entrez Gene 14526 Mouse</a> <a href="#">Entrez Gene 24952 Rat</a> <a href="#">Entrez Gene 2641 Human</a> <a href="#">P01275</a>
Background:	GCG Glucagon plays a key role in glucose metabolism and homeostasis. Regulates blood glucose by increasing gluconeogenesis and decreasing glycolysis. A counterregulatory hormone of insulin, raises plasma glucose levels in response to insulin-induced hypoglycemia. Plays an important role in initiating and maintaining hyperglycemic conditions in diabetes. Belongs to the glucagon family. Glucagon release is stimulated by hypoglycemia and inhibited by hyperglycemia, insulin, and somatostatin. GLP-1 and GLP-2 are induced in response to nutrient ingestion.



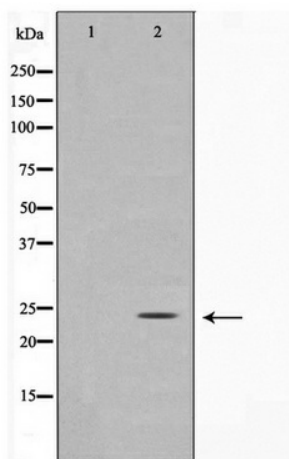
[View online »](#)

**Synonyms:** GLP1; GLP2; GRPP

**Note:** Glucagon antibody detects endogenous levels of total Glucagon

**Protein Families:** Druggable Genome, ES Cell Differentiation/IPS, Secreted Protein

**Product images:**



Western blot analysis on COS7 cell lysate using  
Glucagon Antibody