

Product datasheet for **TA347385**

Galectin 3 (LGALS3) Rabbit Polyclonal Antibody

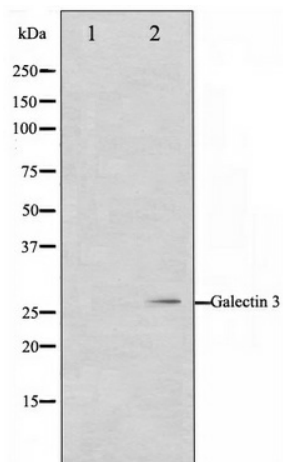
Product data:

Product Type:	Primary Antibodies
Applications:	WB
Recommended Dilution:	WB: 1:500-1:3000
Reactivity:	Human, Mouse, Rat
Host:	Rabbit
Isotype:	IgG
Clonality:	Polyclonal
Immunogen:	The immunogen for anti-Galectin 3 Antibody: A synthesized peptide derived from human Galectin 3
Formulation:	Rabbit IgG in phosphate buffered saline , pH 7.4, 150mM NaCl, 0.02% sodium azide and 50% glycerol. Store at -20?. Stable for 12 months from date of receipt
Concentration:	lot specific
Purification:	Affinity-chromatography
Conjugation:	Unconjugated
Storage:	Store at -20°C as received.
Stability:	Stable for 12 months from date of receipt.
Predicted Protein Size:	27 kDa
Gene Name:	lectin, galactoside binding soluble 3
Database Link:	NP_002297 Entrez Gene 16854 Mouse Entrez Gene 83781 Rat Entrez Gene 3958 Human P17931
Background:	galectin-3 galactose-specific lectin which binds IgE. Expressed at a high level in the colonic epithelium. Also abundant in activated macrophages.
Synonyms:	CBP35; GAL3; GALBP; GALIG; L31; LGALS2; MAC2
Note:	Galectin 3 antibody detects endogenous levels of total Galectin 3
Protein Families:	Secreted Protein



[View online »](#)

Product images:



Western blot analysis on HeLa cell lysate using Galectin 3 Antibody