

Product datasheet for **TA347382**

FLI1 Rabbit Polyclonal Antibody

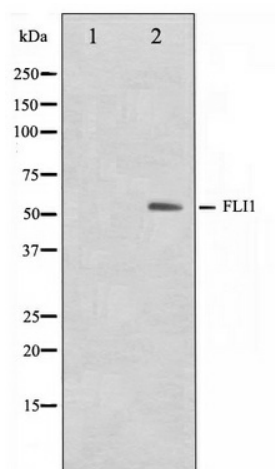
Product data:

Product Type:	Primary Antibodies
Applications:	WB
Recommended Dilution:	WB: 1:500-1:3000
Reactivity:	Human, Mouse
Host:	Rabbit
Isotype:	IgG
Clonality:	Polyclonal
Immunogen:	The immunogen for anti-FLI1 Antibody: A synthesized peptide derived from human FLI1
Formulation:	Rabbit IgG in phosphate buffered saline , pH 7.4, 150mM NaCl, 0.02% sodium azide and 50% glycerol. Store at -20?. Stable for 12 months from date of receipt
Concentration:	lot specific
Purification:	Affinity-chromatography
Conjugation:	Unconjugated
Storage:	Store at -20°C as received.
Stability:	Stable for 12 months from date of receipt.
Predicted Protein Size:	50 kDa
Gene Name:	Fli-1 proto-oncogene, ETS transcription factor
Database Link:	NP_002008 Entrez Gene 14247 Mouse Entrez Gene 2313 Human Q01543
Background:	FLI1 Sequence-specific transcriptional activator. Recognizes the DNA sequence 5'-C[CA]GGAAGT-3'. Belongs to the ETS family. Can form homodimers or heterodimers with ETV6/TEL1. 2 isoforms of the human protein are produced by alternative splicing.
Synonyms:	EWSR2; SIC-1
Note:	FLI1 antibody detects endogenous levels of total FLI1
Protein Families:	Transcription Factors



[View online »](#)

Product images:



Western blot analysis on NIH-3T3 cell lysate using FLI1 Antibody