

Product datasheet for **TA347380**

FGFR2 Rabbit Polyclonal Antibody

Product data:

| | |
|-------------------------|---|
| Product Type: | Primary Antibodies |
| Applications: | WB |
| Recommended Dilution: | WB: 1:500-1:3000 |
| Reactivity: | Human, Mouse, Rat |
| Host: | Rabbit |
| Isotype: | IgG |
| Clonality: | Polyclonal |
| Immunogen: | The immunogen for anti-FGFR2 Antibody: A synthesized peptide derived from human FGFR2 |
| Formulation: | Rabbit IgG in phosphate buffered saline , pH 7.4, 150mM NaCl, 0.02% sodium azide and 50% glycerol. Store at -20?. Stable for 12 months from date of receipt |
| Concentration: | lot specific |
| Purification: | Affinity-chromatography |
| Conjugation: | Unconjugated |
| Storage: | Store at -20°C as received. |
| Stability: | Stable for 12 months from date of receipt. |
| Predicted Protein Size: | 92 kDa |
| Gene Name: | fibroblast growth factor receptor 2 |
| Database Link: | NP_000132 Entrez Gene 14183 Mouse Entrez Gene 25022 Rat Entrez Gene 2263 Human P21802 |

Background: FGFR2 a receptor tyrosine kinase of the highly-conserved FGFR family that binds fibroblast growth factor (FGF). Mutations are associated with many craniosynostotic syndromes and bone malformations. Mutations cause syndromes with defects in facial and limb development, including Crouzon syndrome, Beare-Stevenson cutis gyrata syndrome, Pfeiffer syndrome, Apert syndrome, and Jackson-Weiss syndrome. Somatic mutations seen in gastric cancer. Amplified in gastric, breast and some B cell cancers, but deleted in glioblastoma. Twenty splice-variant isoforms have been described. Note: This description may include information from UniProtKB.



[View online »](#)

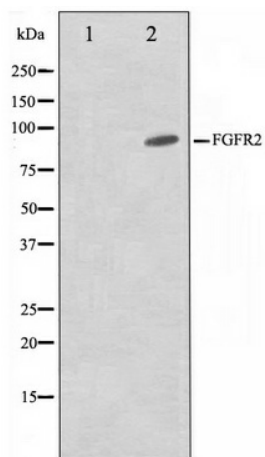
Synonyms: BBDS; BEK; BFR-1; CD332; CEK3; CFD1; ECT1; JWS; K-SAM; KGFR; TK14; TK25

Note: FGFR2 antibody detects endogenous levels of total FGFR2

Protein Families: Druggable Genome, Protein Kinase, Secreted Protein, Transmembrane

Protein Pathways: Endocytosis, MAPK signaling pathway, Pathways in cancer, Prostate cancer, Regulation of actin cytoskeleton

Product images:



Western blot analysis on A549 cell lysate using FGFR2 Antibody