

## Product datasheet for **TA347379**

### FGFR1 Oncogene Partner (FGFR1OP) Rabbit Polyclonal Antibody

#### Product data:

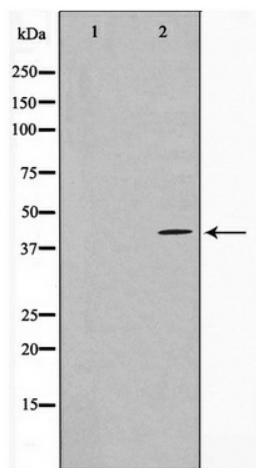
Product Type:	Primary Antibodies
Applications:	WB
Recommended Dilution:	WB: 1:500-1:3000
Reactivity:	Human, Mouse, Rat
Host:	Rabbit
Isotype:	IgG
Clonality:	Polyclonal
Immunogen:	The immunogen for anti-FGFR1 Oncogene Partner Antibody: A synthesized peptide derived from human FGFR1 Oncogene Partner
Formulation:	Rabbit IgG in phosphate buffered saline , pH 7.4, 150mM NaCl, 0.02% sodium azide and 50% glycerol. Store at -20?. Stable for 12 months from date of receipt
Concentration:	lot specific
Purification:	Affinity-chromatography
Conjugation:	Unconjugated
Storage:	Store at -20°C as received.
Stability:	Stable for 12 months from date of receipt.
Predicted Protein Size:	43 kDa
Gene Name:	FGFR1 oncogene partner
Database Link:	<a href="#">NP_919410</a> <a href="#">Entrez Gene 75296 Mouse</a> <a href="#">Entrez Gene 683722 Rat</a> <a href="#">Entrez Gene 11116 Human</a> <a href="#">O95684</a>
Background:	FOP Required for anchoring microtubules to the centrosomes. Homodimer. Part of a ternary complex that contains CEP350, FGFR1OP and MAPRE1. Interacts directly with CEP350 and MAPRE1. 3 isoforms of the human protein are produced by alternative splicing.
Synonyms:	FOP
Note:	FGFR1 Oncogene Partner antibody detects endogenous levels of total FGFR1 Oncogene Partner



[View online »](#)

Protein Families: Druggable Genome

### Product images:



Western blot analysis on HepG2 cell lysate using FGFR1 Oncogene Partner Antibody