

## Product datasheet for **TA347375**

### ERCC1 Rabbit Polyclonal Antibody

#### Product data:

Product Type:	Primary Antibodies
Applications:	WB
Recommended Dilution:	WB: 1:500-1:3000
Reactivity:	Human, Mouse
Host:	Rabbit
Isotype:	IgG
Clonality:	Polyclonal
Immunogen:	The immunogen for anti-ERCC1 Antibody: A synthesized peptide derived from human ERCC1
Formulation:	Rabbit IgG in phosphate buffered saline , pH 7.4, 150mM NaCl, 0.02% sodium azide and 50% glycerol. Store at -20?. Stable for 12 months from date of receipt
Concentration:	lot specific
Purification:	Affinity-chromatography
Conjugation:	Unconjugated
Storage:	Store at -20°C as received.
Stability:	Stable for 12 months from date of receipt.
Predicted Protein Size:	36 kDa
Gene Name:	ERCC excision repair 1, endonuclease non-catalytic subunit
Database Link:	<a href="#">NP_973730</a> <a href="#">Entrez Gene 13870 Mouse</a> <a href="#">Entrez Gene 2067 Human</a> <a href="#">P07992</a>
Background:	ERCC1 a structure-specific DNA repair endonuclease responsible for the 5'-incision during DNA excision repair. Belongs to the ERCC1/RAD10/SWI10 family. Heterodimer composed of ERCC1 and XPF/ERRC4. Defects in ERCC1 are the cause of cerebro-oculo-facio-skeletal syndrome type 4, a degenerative autosomal recessive disorder of prenatal onset affecting the brain, eye and spinal cord.
Synonyms:	COFS4; RAD10; UV20
Note:	ERCC1 antibody detects endogenous levels of total ERCC1

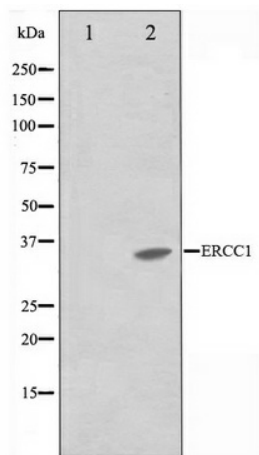


[View online »](#)

Protein Families: Druggable Genome

Protein Pathways: Nucleotide excision repair

### Product images:



Western blot analysis on NIH-3T3 cell lysate using ERCC1 Antibody