

## Product datasheet for **TA347374**

### E2F6 Rabbit Polyclonal Antibody

#### Product data:

Product Type:	Primary Antibodies
Applications:	WB
Recommended Dilution:	WB: 1:500-1:3000
Reactivity:	Human, Mouse, Rat
Host:	Rabbit
Isotype:	IgG
Clonality:	Polyclonal
Immunogen:	The immunogen for anti-E2F6 Antibody: A synthesized peptide derived from human E2F6
Formulation:	Rabbit IgG in phosphate buffered saline , pH 7.4, 150mM NaCl, 0.02% sodium azide and 50% glycerol. Store at -20?. Stable for 12 months from date of receipt
Concentration:	lot specific
Purification:	Affinity-chromatography
Conjugation:	Unconjugated
Storage:	Store at -20°C as received.
Stability:	Stable for 12 months from date of receipt.
Predicted Protein Size:	31 kDa
Gene Name:	E2F transcription factor 6
Database Link:	<a href="#">NP_937987</a> <a href="#">Entrez Gene 50496 MouseEntrez Gene 313978 RatEntrez Gene 1876 Human O75461</a>
Background:	E2F6 Inhibitor of E2F-dependent transcription. Binds DNA cooperatively with DP proteins through the E2 recognition site, 5'-TTTC[CG]CGC-3'. Has a preference for the 5'-TTTCCCGC-3' E2F recognition site. E2F-6 lacks the transcriptional activation and pocket protein binding domains. Appears to regulate a subset of E2F-dependent genes whose products are required for entry into the cell cycle but not for normal cell cycle progression. May silence expression via the recruitment of a chromatin remodeling complex containing histone H3-K9 methyltransferase activity.
Synonyms:	E2F-6

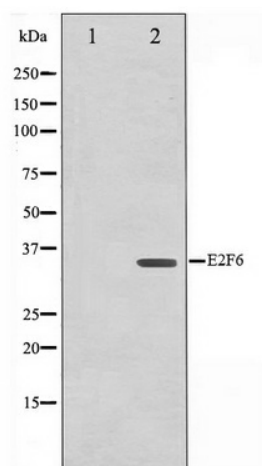


[View online »](#)

**Note:** E2F6 antibody detects endogenous levels of total E2F6

**Protein Families:** Transcription Factors

**Product images:**



Western blot analysis on HepG2 cell lysate using E2F6 Antibody