

Product datasheet for **TA347373**

E2F4 Rabbit Polyclonal Antibody

Product data:

Product Type:	Primary Antibodies
Applications:	WB
Recommended Dilution:	WB: 1:500-1:3000
Reactivity:	Human, Mouse, Rat
Host:	Rabbit
Isotype:	IgG
Clonality:	Polyclonal
Immunogen:	The immunogen for anti-E2F4 Antibody: A synthesized peptide derived from human E2F4
Formulation:	Rabbit IgG in phosphate buffered saline , pH 7.4, 150mM NaCl, 0.02% sodium azide and 50% glycerol. Store at -20?. Stable for 12 months from date of receipt
Concentration:	lot specific
Purification:	Affinity-chromatography
Conjugation:	Unconjugated
Storage:	Store at -20°C as received.
Stability:	Stable for 12 months from date of receipt.
Predicted Protein Size:	44 kDa
Gene Name:	E2F transcription factor 4
Database Link:	NP_001941 Entrez Gene 104394 MouseEntrez Gene 100360427 RatEntrez Gene 1874 Human Q16254
Background:	E2F4 Transcription activator that binds DNA cooperatively with DP proteins through the E2 recognition site, 5'-TTTC[CG]CGC- 3' found in the promoter region of a number of genes whose products are involved in cell cycle regulation or in DNA replication. The DRTF1/E2F complex functions in the control of cell-cycle progression from G1 to S phase. E2F-4 binds with high affinity to RBL1 and RBL2. In some instances, can also bind RB protein. Belongs to the E2F/DP family. Component of the DRTF1/E2F transcription factor complex. Binds cooperatively with DP-1 to E2F sites
Synonyms:	E2F-4



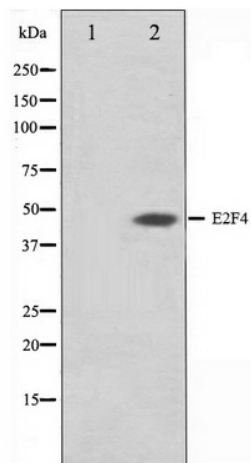
[View online »](#)

Note: E2F4 antibody detects endogenous levels of total E2F4

Protein Families: Druggable Genome, Transcription Factors

Protein Pathways: Cell cycle, TGF-beta signaling pathway

Product images:



Western blot analysis on COS7 cell lysate using E2F4 Antibody