

## Product datasheet for **TA347372**

### Dysferlin (DYSF) Rabbit Polyclonal Antibody

#### Product data:

Product Type:	Primary Antibodies
Applications:	WB
Recommended Dilution:	WB: 1:500-1:3000
Reactivity:	Human, Mouse
Host:	Rabbit
Isotype:	IgG
Clonality:	Polyclonal
Immunogen:	The immunogen for anti-Dysferlin Antibody: A synthesized peptide derived from human Dysferlin
Formulation:	Rabbit IgG in phosphate buffered saline , pH 7.4, 150mM NaCl, 0.02% sodium azide and 50% glycerol. Store at -20?. Stable for 12 months from date of receipt
Concentration:	lot specific
Purification:	Affinity-chromatography
Conjugation:	Unconjugated
Storage:	Store at -20°C as received.
Stability:	Stable for 12 months from date of receipt.
Predicted Protein Size:	240 kDa
Gene Name:	dysferlin
Database Link:	<a href="#">NP_001123927</a> <a href="#">Entrez Gene 26903 Mouse</a> <a href="#">Entrez Gene 8291 Human</a> <a href="#">O75923</a>
Background:	DYSF Key calcium ion sensor involved in the Ca(2+)-triggered synaptic vesicle-plasma membrane fusion. Plays a role in the sarcolemma repair mechanism of both skeletal muscle and cardiomyocytes that permits rapid resealing of membranes disrupted by mechanical stress. Belongs to the ferlin family. Interacts with CACNA1S. Interacts with ANXA1; the interaction is Ca(2+)- and injury state-dependent.
Synonyms:	FER1L1; LGMD2B; MMD1

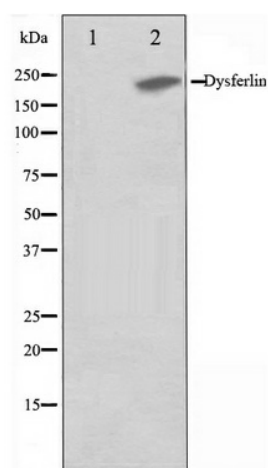


[View online »](#)

**Note:** Dysferlin antibody detects endogenous levels of total Dysferlin

**Protein Families:** Transmembrane

**Product images:**



Western blot analysis on K562 cell lysate using  
Dysferlin Antibody