

Product datasheet for **TA347367**

Cyclin G (CCNG1) Rabbit Polyclonal Antibody

Product data:

Product Type:	Primary Antibodies
Applications:	WB
Recommended Dilution:	WB: 1:500-1:3000
Reactivity:	Human, Mouse, Rat
Host:	Rabbit
Isotype:	IgG
Clonality:	Polyclonal
Immunogen:	The immunogen for anti-Cyclin G Antibody: A synthesized peptide derived from human Cyclin G
Formulation:	Rabbit IgG in phosphate buffered saline , pH 7.4, 150mM NaCl, 0.02% sodium azide and 50% glycerol. Store at -20?. Stable for 12 months from date of receipt
Concentration:	lot specific
Purification:	Affinity-chromatography
Conjugation:	Unconjugated
Storage:	Store at -20°C as received.
Stability:	Stable for 12 months from date of receipt.
Predicted Protein Size:	29 kDa
Gene Name:	cyclin G1
Database Link:	NP_954854 Entrez Gene 12450 Mouse Entrez Gene 25405 Rat Entrez Gene 900 Human P51959
Background:	CCNG1 May play a role in growth regulation. Is associated with G2/M phase arrest in response to DNA damage. May be an intermediate by which p53 mediates its role as an inhibitor of cellular proliferation. Belongs to the cyclin family. Cyclin G subfamily. Activated in breast and prostate cancer cells. Activated by actinomycin-D induced DNA damage.
Synonyms:	CCNG
Note:	Cyclin G antibody detects endogenous levels of total Cyclin G

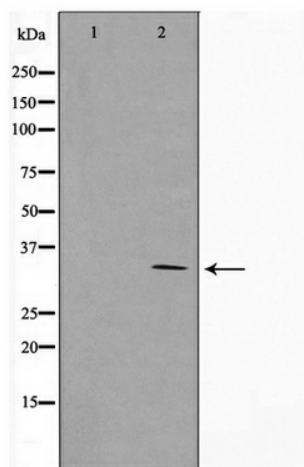


[View online »](#)

Protein Families: Druggable Genome

Protein Pathways: p53 signaling pathway

Product images:



Western blot analysis on Jurkat cell lysate using Cyclin G Antibody