

## Product datasheet for **TA347364**

### Cyclin A1 (CCNA1) Rabbit Polyclonal Antibody

#### Product data:

Product Type:	Primary Antibodies
Applications:	WB
Recommended Dilution:	WB: 1:500-1:3000
Reactivity:	Human, Mouse, Rat
Host:	Rabbit
Isotype:	IgG
Clonality:	Polyclonal
Immunogen:	The immunogen for anti-Cyclin A Antibody: A synthesized peptide derived from human Cyclin A
Formulation:	Rabbit IgG in phosphate buffered saline , pH 7.4, 150mM NaCl, 0.02% sodium azide and 50% glycerol. Store at -20?. Stable for 12 months from date of receipt
Concentration:	lot specific
Purification:	Affinity-chromatography
Conjugation:	Unconjugated
Storage:	Store at -20°C as received.
Stability:	Stable for 12 months from date of receipt.
Predicted Protein Size:	53 kDa
Gene Name:	cyclin A1
Database Link:	<a href="#">NP_003905</a> <a href="#">Entrez Gene 12427 Mouse</a> <a href="#">Entrez Gene 295052 Rat</a> <a href="#">Entrez Gene 8900 Human</a> <a href="#">P78396</a>
Background:	CCNA1 May be involved in the control of the cell cycle at the G1/S (start) and G2/M (mitosis) transitions. May primarily function in the control of the germline meiotic cell cycle and additionally in the control of mitotic cell cycle in some somatic cells. Belongs to the cyclin family;CCNA2 a member of the highly conserved cyclin family, whose members are characterized by a dramatic periodicity in protein abundance through the cell cycle.
Synonyms:	CT146

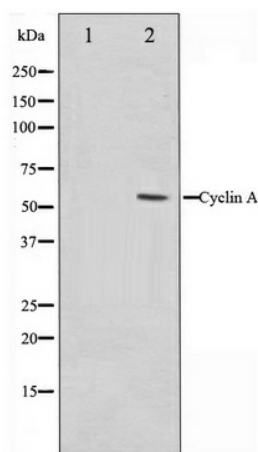


[View online »](#)

**Note:** Cyclin A antibody detects endogenous levels of total Cyclin A

**Protein Families:** Druggable Genome

**Protein Pathways:** Acute myeloid leukemia, Cell cycle, Pathways in cancer, Progesterone-mediated oocyte maturation

**Product images:**

Western blot analysis on COS7 cell lysate using Cyclin A Antibody