

Product datasheet for **TA347358**

Collagen II (COL2A1) Rabbit Polyclonal Antibody

Product data:

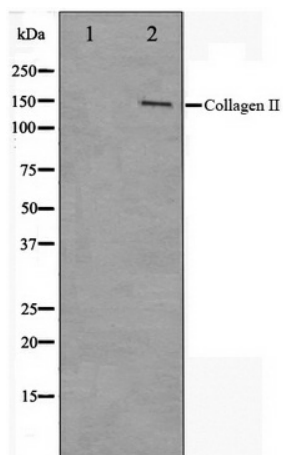
Product Type:	Primary Antibodies
Applications:	WB
Recommended Dilution:	WB: 1:500-1:3000
Reactivity:	Human, Mouse, Rat
Host:	Rabbit
Isotype:	IgG
Clonality:	Polyclonal
Immunogen:	The immunogen for anti-Collagen II Antibody: A synthesized peptide derived from human Collagen II
Formulation:	Rabbit IgG in phosphate buffered saline , pH 7.4, 150mM NaCl, 0.02% sodium azide and 50% glycerol. Store at -20?. Stable for 12 months from date of receipt
Concentration:	lot specific
Purification:	Affinity-chromatography
Conjugation:	Unconjugated
Storage:	Store at -20°C as received.
Stability:	Stable for 12 months from date of receipt.
Predicted Protein Size:	140 kDa
Gene Name:	collagen type II alpha 1 chain
Database Link:	NP_001835 Entrez Gene 12824 Mouse Entrez Gene 25412 Rat Entrez Gene 1280 Human P02458
Background:	COL2A1 Type II collagen is specific for cartilaginous tissues. It is essential for the normal embryonic development of the skeleton, for linear growth and for the ability of cartilage to resist compressive forces. Belongs to the fibrillar collagen family. Homotrimers of alpha 1(II) chains. 3 isoforms of the human protein are produced by alternative splicing
Synonyms:	ANFH; AOM; COL11A3; SEDC; STL1
Note:	Collagen II antibody detects endogenous levels of total Collagen II



[View online »](#)

Protein Pathways: ECM-receptor interaction, Focal adhesion

Product images:



Western blot analysis on COLO205 cell lysate using Collagen II Antibody