

Product datasheet for **TA347357**

Claudin 10 (CLDN10) Rabbit Polyclonal Antibody

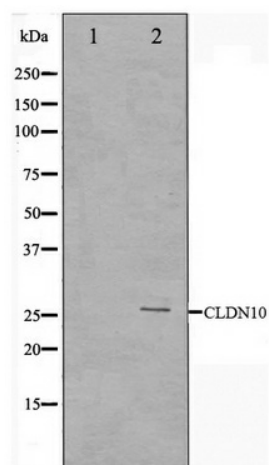
Product data:

Product Type:	Primary Antibodies
Applications:	WB
Recommended Dilution:	WB: 1:500-1:3000
Reactivity:	Human, Mouse
Host:	Rabbit
Isotype:	IgG
Clonality:	Polyclonal
Immunogen:	The immunogen for anti-Claudin 10 Antibody: A synthesized peptide derived from human Claudin 10
Formulation:	Rabbit IgG in phosphate buffered saline , pH 7.4, 150mM NaCl, 0.02% sodium azide and 50% glycerol. Store at -20?. Stable for 12 months from date of receipt
Concentration:	lot specific
Purification:	Affinity-chromatography
Conjugation:	Unconjugated
Storage:	Store at -20°C as received.
Stability:	Stable for 12 months from date of receipt.
Predicted Protein Size:	25 kDa
Gene Name:	claudin 10
Database Link:	NP_008915 Entrez Gene 58187 Mouse Entrez Gene 9071 Human P78369
Background:	claudin 10 Plays a major role in tight junction-specific obliteration of the intercellular space, through calcium- independent cell-adhesion activity. Belongs to the claudin family.
Synonyms:	CPETRL3; OSP-L
Note:	Claudin 10 antibody detects endogenous levels of total Claudin 10
Protein Families:	Transmembrane
Protein Pathways:	Cell adhesion molecules (CAMs), Leukocyte transendothelial migration, Tight junction



[View online »](#)

Product images:



Western blot analysis on LOVO cell lysate using Claudin 10 Antibody