

## Product datasheet for **TA347354**

### Claudin 5 (CLDN5) Rabbit Polyclonal Antibody

#### Product data:

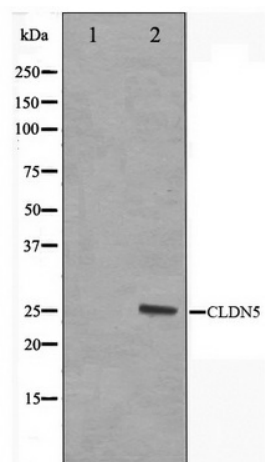
Product Type:	Primary Antibodies
Applications:	WB
Recommended Dilution:	WB: 1:500-1:3000
Reactivity:	Human, Mouse, Rat
Host:	Rabbit
Isotype:	IgG
Clonality:	Polyclonal
Immunogen:	The immunogen for anti-Claudin 5 Antibody: A synthesized peptide derived from human Claudin 5
Formulation:	Rabbit IgG in phosphate buffered saline , pH 7.4, 150mM NaCl, 0.02% sodium azide and 50% glycerol. Store at -20?. Stable for 12 months from date of receipt
Concentration:	lot specific
Purification:	Affinity-chromatography
Conjugation:	Unconjugated
Storage:	Store at -20°C as received.
Stability:	Stable for 12 months from date of receipt.
Predicted Protein Size:	23 kDa
Gene Name:	claudin 5
Database Link:	<a href="#">NP_003268</a> <a href="#">Entrez Gene 12741 Mouse</a> <a href="#">Entrez Gene 65131 Rat</a> <a href="#">Entrez Gene 7122 Human</a> <a href="#">O00501</a>
Background:	claudin 5 Plays a major role in tight junction-specific obliteration of the intercellular space. Belongs to the claudin family. Directly interacts with TJP1/ZO-1, TJP2/ZO-2 and TJP3/ZO- 3. Interacts with MPDZ.
Synonyms:	AWAL; BEC1; CPETRL1; TMVCF
Note:	Claudin 5 antibody detects endogenous levels of total Claudin 5
Protein Families:	Transmembrane



[View online »](#)

Protein Pathways: Cell adhesion molecules (CAMs), Leukocyte transendothelial migration, Tight junction

### Product images:



Western blot analysis on A549 cell lysate using Claudin 5 Antibody