

Product datasheet for **TA347350**

Caveolin 1 (CAV1) Rabbit Polyclonal Antibody

Product data:

Product Type:	Primary Antibodies
Applications:	WB
Recommended Dilution:	WB: 1:500-1:3000
Reactivity:	Human, Mouse, Rat
Host:	Rabbit
Isotype:	IgG
Clonality:	Polyclonal
Immunogen:	The immunogen for anti-Caveolin-1 Antibody: A synthesized peptide derived from human Caveolin-1
Formulation:	Rabbit IgG in phosphate buffered saline , pH 7.4, 150mM NaCl, 0.02% sodium azide and 50% glycerol. Store at -20?. Stable for 12 months from date of receipt
Concentration:	lot specific
Purification:	Affinity-chromatography
Conjugation:	Unconjugated
Storage:	Store at -20°C as received.
Stability:	Stable for 12 months from date of receipt.
Predicted Protein Size:	25 kDa
Gene Name:	caveolin 1
Database Link:	NP_001744 Entrez Gene 12389 Mouse Entrez Gene 25404 Rat Entrez Gene 857 Human Q03135
Background:	caveolin-1 May act as a scaffolding protein within caveolar membranes. Interacts directly with G-protein alpha subunits and can functionally regulate their activity. Involved in the costimulatory signal essential for T-cell receptor (TCR)- mediated T-cell activation. Its binding to DPP4 induces T-cell proliferation and NF-kappa-B activation in a T-cell receptor/CD3-dependent manner. Belongs to the caveolin family. Homooligomer. Interacts with GLIPR2, NOSTRIN, SNAP25 and syntaxin. Interacts with rotavirus A NSP4.
Synonyms:	BSCL3; CGL3; LCCNS; MSTP085; PPH3; VIP21



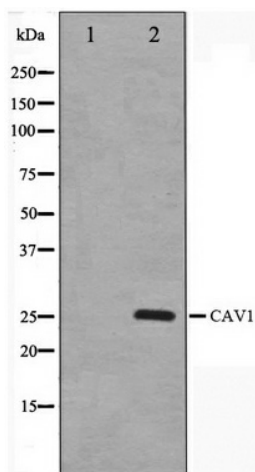
[View online »](#)

Note: Caveolin-1 antibody detects endogenous levels of total Caveolin-1

Protein Families: Druggable Genome, Transmembrane

Protein Pathways: Focal adhesion, Viral myocarditis

Product images:



Western blot analysis on HuvEc cell lysate using Caveolin-1 Antibody