

Product datasheet for **TA347348**

CARD6 Rabbit Polyclonal Antibody

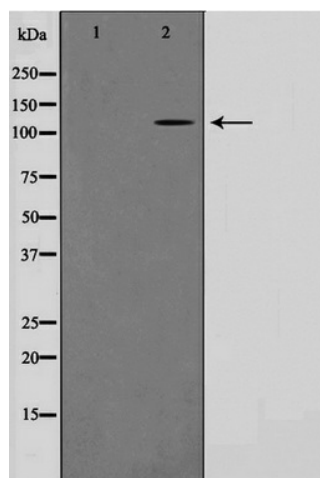
Product data:

Product Type:	Primary Antibodies
Applications:	WB
Recommended Dilution:	WB: 1:500-1:3000
Reactivity:	Human
Host:	Rabbit
Isotype:	IgG
Clonality:	Polyclonal
Immunogen:	The immunogen for anti-CARD6 Antibody: A synthesized peptide derived from human CARD6
Formulation:	Rabbit IgG in phosphate buffered saline , pH 7.4, 150mM NaCl, 0.02% sodium azide and 50% glycerol. Store at -20?. Stable for 12 months from date of receipt
Concentration:	lot specific
Purification:	Affinity-chromatography
Conjugation:	Unconjugated
Storage:	Store at -20°C as received.
Stability:	Stable for 12 months from date of receipt.
Predicted Protein Size:	116 kDa
Gene Name:	caspase recruitment domain family member 6
Database Link:	NP_115976 Entrez Gene 84674 Human Q9BX69
Background:	CARD6 May be involved in apoptosis
Synonyms:	CINCIN1
Note:	CARD6 antibody detects endogenous levels of total CARD6
Protein Families:	Druggable Genome
Protein Pathways:	NOD-like receptor signaling pathway



[View online »](#)

Product images:



Western blot analysis on HeLa cell lysate using
CARD6 Antibody