

## Product datasheet for **TA347347**

### Caspase 10 (CASP10) Rabbit Polyclonal Antibody

#### Product data:

Product Type:	Primary Antibodies
Applications:	WB
Recommended Dilution:	WB: 1:500-1:3000
Reactivity:	Human
Host:	Rabbit
Isotype:	IgG
Clonality:	Polyclonal
Immunogen:	The immunogen for anti-Caspase 10 Antibody: A synthesized peptide derived from human Caspase 10
Formulation:	Rabbit IgG in phosphate buffered saline , pH 7.4, 150mM NaCl, 0.02% sodium azide and 50% glycerol. Store at -20?. Stable for 12 months from date of receipt
Concentration:	lot specific
Purification:	Affinity-chromatography
Conjugation:	Unconjugated
Storage:	Store at -20°C as received.
Stability:	Stable for 12 months from date of receipt.
Predicted Protein Size:	60 kDa
Gene Name:	caspase 10
Database Link:	<a href="#">NP_001193453</a> <a href="#">Entrez Gene 843 Human</a> <a href="#">Q92851</a>



[View online »](#)

**Background:**

Casp10 Involved in the activation cascade of caspases responsible for apoptosis execution. Recruited to both Fas- and TNFR-1 receptors in a FADD dependent manner. May participate in the granzyme B apoptotic pathways. Cleaves and activates caspase- 3, -4, -6, -7, -8, and -9. Hydrolyzes the small- molecule substrates, Tyr-Val-Ala-Asp-|-AMC and Asp-Glu-Val-Asp-|-AMC. Belongs to the peptidase C14A family. Heterotetramer that consists of two anti-parallel arranged heterodimers, each one formed by a 23/17 kDa (p23/17) (depending on the splicing events) and a 12 kDa (p12) subunit. Self-associates. Interacts with FADD and CASP8. Found in a Fas signaling complex consisting of FAS, FADD, CASP8 and CASP10. 6 isoforms of the human protein are produced by alternative splicing.

**Synonyms:**

ALPS2; FLICE2; MCH4

**Note:**

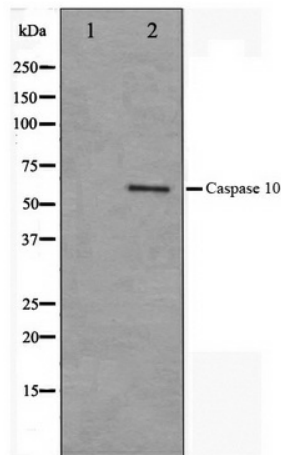
Caspase 10 antibody detects endogenous levels of total Caspase 10

**Protein Families:**

Druggable Genome, Protease

**Protein Pathways:**

Apoptosis, RIG-I-like receptor signaling pathway

**Product images:**

Western blot analysis on HeLa cell lysate using Caspase 10 Antibody