

## Product datasheet for **TA347344**

### Bak (BAK1) Rabbit Polyclonal Antibody

#### Product data:

Product Type:	Primary Antibodies
Applications:	WB
Recommended Dilution:	WB: 1:500-1:3000
Reactivity:	Human, Mouse
Host:	Rabbit
Isotype:	IgG
Clonality:	Polyclonal
Immunogen:	The immunogen for anti-Bak Antibody: A synthesized peptide derived from human Bak
Formulation:	Rabbit IgG in phosphate buffered saline , pH 7.4, 150mM NaCl, 0.02% sodium azide and 50% glycerol. Store at -20?. Stable for 12 months from date of receipt
Concentration:	lot specific
Purification:	Affinity-chromatography
Conjugation:	Unconjugated
Storage:	Store at -20°C as received.
Stability:	Stable for 12 months from date of receipt.
Predicted Protein Size:	25 kDa
Gene Name:	BCL2 antagonist/killer 1
Database Link:	<a href="#">NP_001179</a> <a href="#">Entrez Gene 12018 Mouse</a> <a href="#">Entrez Gene 578 Human</a> <a href="#">Q16611</a>
Background:	Bak1 In the presence of an appropriate stimulus, accelerates programmed cell death by binding to, and antagonizing the anti- apoptotic action of BCL2 or its adenovirus homolog E1B 19k protein. Low micromolar levels of zinc ions inhibit the promotion of apoptosis. Belongs to the Bcl-2 family. Interacts with BCL2A1. Homodimer. Formation of the homodimer is zinc-dependent. Forms heterodimers with BCL2, E1B 19k protein, and BCL2L1 isoform Bcl-X(L). Interacts with myxoma virus protein M11L
Synonyms:	BAK; BAK-LIKE; BCL2L7; CDN1

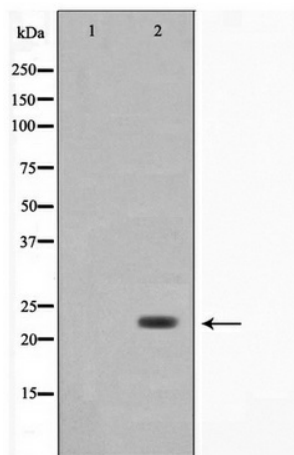


[View online »](#)

**Note:** Bak antibody detects endogenous levels of total Bak

**Protein Families:** Druggable Genome, Stem cell - Pluripotency, Transmembrane

**Product images:**



Western blot analysis on 293 cell lysate using Bak Antibody