

Product datasheet for **TA347343**

Apoptosis repressor with CARD (NOL3) Rabbit Polyclonal Antibody

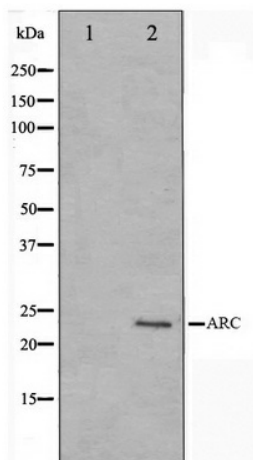
Product data:

Product Type:	Primary Antibodies
Applications:	WB
Recommended Dilution:	WB: 1:500-1:3000
Reactivity:	Human
Host:	Rabbit
Isotype:	IgG
Clonality:	Polyclonal
Immunogen:	The immunogen for anti-ARC Antibody: A synthesized peptide derived from human ARC
Formulation:	Rabbit IgG in phosphate buffered saline , pH 7.4, 150mM NaCl, 0.02% sodium azide and 50% glycerol. Store at -20?. Stable for 12 months from date of receipt
Concentration:	lot specific
Purification:	Affinity-chromatography
Conjugation:	Unconjugated
Storage:	Store at -20°C as received.
Stability:	Stable for 12 months from date of receipt.
Predicted Protein Size:	23 kDa
Gene Name:	nucleolar protein 3
Database Link:	NP_003937 Entrez Gene 8996 Human O60936
Background:	ARC Isoform 1 may be involved in RNA splicing. Interacts with TFPT. Isoform 1 oligomerizes and binds to SFRS9/SRp30C and also interacts with NPM1. Isoform 2 binds CASP2/caspase-2 and CASP8/caspase-8 and inhibits caspase-8 activity. 2 isoforms of the human protein are produced by alternative splicing.
Synonyms:	ARC; FCM; MYP; NOP; NOP30
Note:	ARC antibody detects endogenous levels of total ARC



[View online »](#)

Product images:



Western blot analysis on HeLa cell lysate using ARC Antibody