

Product datasheet for TA347341

Annexin VI (ANXA6) Rabbit Polyclonal Antibody

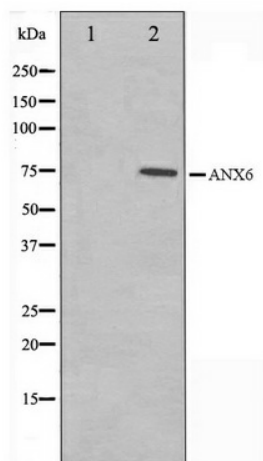
Product data:

Product Type:	Primary Antibodies
Applications:	WB
Recommended Dilution:	WB: 1:500-1:3000
Reactivity:	Human
Host:	Rabbit
Isotype:	IgG
Clonality:	Polyclonal
Immunogen:	The immunogen for anti-Annexin A6 Antibody: A synthesized peptide derived from human Annexin A6
Formulation:	Rabbit IgG in phosphate buffered saline , pH 7.4, 150mM NaCl, 0.02% sodium azide and 50% glycerol. Store at -20?. Stable for 12 months from date of receipt
Concentration:	lot specific
Purification:	Affinity-chromatography
Storage:	Store at -20°C as received.
Stability:	Stable for 12 months from date of receipt.
Predicted Protein Size:	75 kDa
Gene Name:	annexin A6
Database Link:	NP_001146 Entrez Gene 309 Human
Background:	ANXA6 a calcium/phospholipid-binding protein that may associate with CD21. May regulate the release of Ca(2+) from intracellular stores. Phosphorylated in response to growth factor stimulation. Annexins are a family of structurally related proteins whose common property is calcium-dependent binding to phospholipids. There are at least ten different annexins in mammalian species. Annexins do not contain signal peptides, yet some annexins (A1, A2 and A5) appear to be secreted in a physiologically regulated fashion.
Synonyms:	ANX6; CBP68
Note:	Annexin A6 antibody detects endogenous levels of total Annexin A6



[View online »](#)

Product images:



Western blot analysis on 293 cell lysate using Annexin A6 Antibody