

Product datasheet for **TA347339**

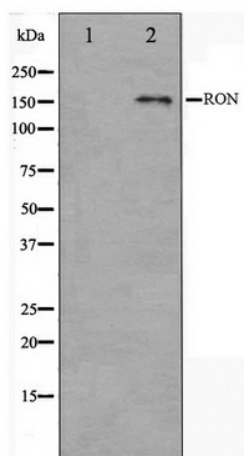
RON (MST1R) Rabbit Polyclonal Antibody

Product data:

Product Type:	Primary Antibodies
Applications:	WB
Recommended Dilution:	WB: 1:500-1:3000
Reactivity:	Human, Mouse
Host:	Rabbit
Isotype:	IgG
Clonality:	Polyclonal
Immunogen:	The immunogen for anti-RON Antibody: A synthesized peptide derived from human RON
Formulation:	Rabbit IgG in phosphate buffered saline , pH 7.4, 150mM NaCl, 0.02% sodium azide and 50% glycerol. Store at -20?. Stable for 12 months from date of receipt
Concentration:	lot specific
Purification:	Affinity-chromatography
Conjugation:	Unconjugated
Storage:	Store at -20°C as received.
Stability:	Stable for 12 months from date of receipt.
Predicted Protein Size:	152 kDa
Gene Name:	macrophage stimulating 1 receptor
Database Link:	NP_002438 Entrez Gene 19882 Mouse Entrez Gene 4486 Human Q04912
Background:	Ron a receptor tyrosine kinase of the Met family. Receptor for macrophage stimulating protein. Can be desensitized by c-Cbl and its binding partner Grb2. Overexpression of wild-type RON causes the formation of lung tumors. Two alternatively spliced isoforms have been described
Synonyms:	CD136; CDw136; PTK8; RON
Note:	RON antibody detects endogenous levels of total RON
Protein Families:	Druggable Genome, ES Cell Differentiation/IPS, Protein Kinase, Transmembrane



[View online »](#)

Product images:

Western blot analysis on HeLa cell lysate using
RON Antibody