

Product datasheet for **TA347338**

RAD17 Rabbit Polyclonal Antibody

Product data:

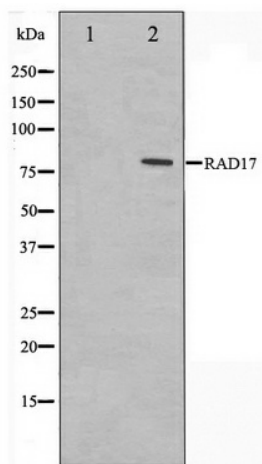
Product Type:	Primary Antibodies
Applications:	WB
Recommended Dilution:	WB: 1:500-1:3000
Reactivity:	Human, Mouse, Rat
Host:	Rabbit
Isotype:	IgG
Clonality:	Polyclonal
Immunogen:	The immunogen for anti-RAD17 Antibody: A synthesized peptide derived from human RAD17
Formulation:	Rabbit IgG in phosphate buffered saline , pH 7.4, 150mM NaCl, 0.02% sodium azide and 50% glycerol. Store at -20?. Stable for 12 months from date of receipt
Concentration:	lot specific
Purification:	Affinity-chromatography
Conjugation:	Unconjugated
Storage:	Store at -20°C as received.
Stability:	Stable for 12 months from date of receipt.
Predicted Protein Size:	77 kDa
Gene Name:	RAD17 checkpoint clamp loader component
Database Link:	NP_579922 Entrez Gene 19356 MouseEntrez Gene 310034 RatEntrez Gene 5884 Human O75943
Background:	Rad17 a cell cycle checkpoint gene required for cell cycle arrest and DNA damage repair in response to DNA damage. Shares strong similarity with DNA replication factor C (RFC), and can form a complex with RFCs. Binds to chromatin prior to DNA damage and is phosphorylated by ATR after the damage. Phosphorylated and activated after DNA damage, inducing cell cycle G2 arrest. Eight alternatively spliced variants have been reported.
Synonyms:	CCYC; HRAD17; R24L; RAD17SP; RAD24
Note:	RAD17 antibody detects endogenous levels of total RAD17



[View online »](#)

Protein Families: Druggable Genome

Product images:



Western blot analysis on HeLa cell lysate using RAD17 Antibody