

Product datasheet for **TA347337**

NEUROD1 Rabbit Polyclonal Antibody

Product data:

Product Type:	Primary Antibodies
Applications:	WB
Recommended Dilution:	WB: 1:500-1:3000
Reactivity:	Human, Mouse, Rat
Host:	Rabbit
Isotype:	IgG
Clonality:	Polyclonal
Immunogen:	The immunogen for anti-Neuro D Antibody: A synthesized peptide derived from human Neuro D
Formulation:	Rabbit IgG in phosphate buffered saline , pH 7.4, 150mM NaCl, 0.02% sodium azide and 50% glycerol. Store at -20?. Stable for 12 months from date of receipt
Concentration:	lot specific
Purification:	Affinity-chromatography
Conjugation:	Unconjugated
Storage:	Store at -20°C as received.
Stability:	Stable for 12 months from date of receipt.
Predicted Protein Size:	36 kDa
Gene Name:	neuronal differentiation 1
Database Link:	NP_002491 Entrez Gene 18012 Mouse Entrez Gene 29458 Rat Entrez Gene 4760 Human Q13562
Background:	NEUROD1 Differentiation factor required for dendrite morphogenesis and maintenance in the cerebellar cortex. Transcriptional activator. Binds to the insulin gene E-box. Efficient DNA binding requires dimerization with another bHLH protein. Heterodimer with TCF3/E47. Interacts with RREB1.
Synonyms:	BETA2; BHF-1; bHLHa3; MODY6; NEUROD
Note:	Neuro D antibody detects endogenous levels of total Neuro D

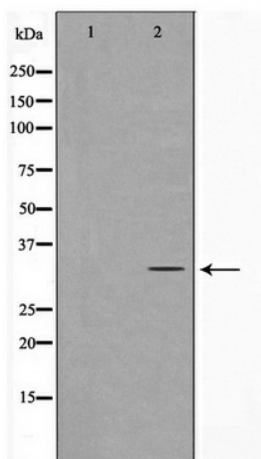


[View online »](#)

Protein Families: Adult stem cells, Druggable Genome, Embryonic stem cells, ES Cell Differentiation/IPS, Transcription Factors

Protein Pathways: Maturity onset diabetes of the young

Product images:



Western blot analysis on HeLa cell lysate using Neuro D Antibody