

Product datasheet for **TA347336**

APLF Rabbit Polyclonal Antibody

Product data:

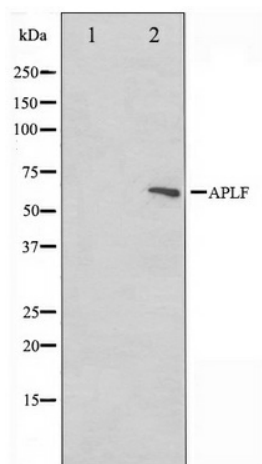
Product Type:	Primary Antibodies
Applications:	WB
Recommended Dilution:	WB: 1:500-1:3000
Reactivity:	Human, Mouse
Host:	Rabbit
Isotype:	IgG
Clonality:	Polyclonal
Immunogen:	The immunogen for anti-APLF Antibody: A synthesized peptide derived from human APLF
Formulation:	Rabbit IgG in phosphate buffered saline , pH 7.4, 150mM NaCl, 0.02% sodium azide and 50% glycerol. Store at -20?. Stable for 12 months from date of receipt
Concentration:	lot specific
Purification:	Affinity-chromatography
Conjugation:	Unconjugated
Storage:	Store at -20°C as received.
Stability:	Stable for 12 months from date of receipt.
Predicted Protein Size:	57 kDa
Gene Name:	aprataxin and PNKP like factor
Database Link:	NP_775816 Entrez Gene 72103 Mouse Entrez Gene 200558 Human Q8IW19
Background:	APLF Nuclease involved in single-strand and double-strand DNA break repair. Recruited to sites of DNA damage through interaction with poly(ADP-ribose), a polymeric post-translational modification synthesized transiently at sites of chromosomal damage to accelerate DNA strand break repair reactions. Displays apurinic- apyrimidinic (AP) endonuclease and 3'-5' exonuclease activities in vitro. Also able to introduce nicks at hydroxyuracil and other types of pyrimidine base damage. Belongs to the APLF family. Interacts with LIG4, PARP1, XRCC1, XRCC4 and XRCC5.
Synonyms:	APFL; C2orf13; PALF; Xip1; ZCCHH1



[View online »](#)

Note: APLF antibody detects endogenous levels of total APLF

Product images:



Western blot analysis on rat heart cell lysate using APLF Antibody