

## Product datasheet for **TA347335**

### GAB2 Rabbit Polyclonal Antibody

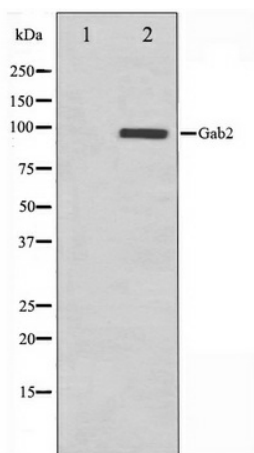
#### Product data:

|                         |  |
|-------------------------|--|
| Product Type:           | Primary Antibodies   |
| Applications:           | WB   |
| Recommended Dilution:   | WB: 1:500-1:3000   |
| Reactivity:             | Human, Mouse, Rat  |
| Host:                   | Rabbit   |
| Isotype:                | IgG  |
| Clonality:              | Polyclonal   |
| Immunogen:              | The immunogen for anti-Gab2 Antibody: A synthesized peptide derived from human Gab2  |
| Formulation:            | Rabbit IgG in phosphate buffered saline , pH 7.4, 150mM NaCl, 0.02% sodium azide and 50% glycerol. Store at -20?. Stable for 12 months from date of receipt                            |
| Concentration:          | lot specific   |
| Purification:           | Affinity-chromatography  |
| Conjugation:            | Unconjugated   |
| Storage:                | Store at -20°C as received.  |
| Stability:              | Stable for 12 months from date of receipt.   |
| Predicted Protein Size: | 97 kDa   |
| Gene Name:              | GRB2 associated binding protein 2  |
| Database Link:          | <a href="#">NP_536739</a><br><a href="#">Entrez Gene 14389 MouseEntrez Gene 84477 RatEntrez Gene 9846 Human Q9UQC2</a>   |
| Background:             | Gab2 an adaptor protein of the GRB2-associated binding protein family. Plays important roles in regulating the growth, differentiation, and function of many hematopoietic cell types. |
| Synonyms:               | KIAA0571   |
| Note:                   | Gab2 antibody detects endogenous levels of total Gab2  |
| Protein Families:       | Druggable Genome   |
| Protein Pathways:       | Chronic myeloid leukemia, Fc epsilon RI signaling pathway, Fc gamma R-mediated phagocytosis  |



[View online »](#)

## Product images:



Western blot analysis on HT29 cell lysate using Gab2 Antibody